

Building a SMARTER Tomorrow



GIGAIPC, established in 2018 as an independent IPC-focused spin-off from GIGABYTE, is driven by a passion for technology and agile intuition of our customer’s requirements. GIGAIPC has an exceptionally sophisticated Research & Development department, enabling us to keep up with the rapid pace of today’s technology. Combined with our outstanding research and design ability, GIGAIPC also has an award-winning Taiwan-based manufacturing facility, synchronizing with GIGAIPC’s R&D department to deliver high quality and reliable products. GIGAIPC is a young and energetic organization driven by surpassing our customer’s expectations, and we promise to offer our customers not only high-quality computing platforms but also world-class service and support. As a result, GIGAIPC’s service centers have been established in most major cities worldwide, and our global presence is still being actively expanding, all ready to offer the best service to our customers.



GIGAIPC is an Associate member of the Intel® Internet of Things Solutions Alliance.



“Building a SMARTER Tomorrow”

The strengths of GIGAIPC are based on the advantages, skills and expertise we have built to realize this vision, including being customer focused and striving for high quality. GIGAIPC is determined to keep reinforcing these strengths as our principles to achieve maximum customer satisfaction.

Key Advantages to work with GIGAIPC

Technology	<ol style="list-style-type: none"> 1. Intel®, AMD etc. Key vendor direct support 2. Latest technical and over 10 years RD development experiences 3. Large coverage rate of design verification
Flexibility	<ol style="list-style-type: none"> 1. Huge off-the-shelf products combination and rich ODM/OEM experiences 2. Multiple manufacturing sites for different high-mix and low-volume requirements 3. Task-force team with multiple functions to align customer’s requirements
Quality	<ol style="list-style-type: none"> 1. Component IPC, audit and approval system 2. Rich resources and equipments on design and manufacture quality system 3. Emphasizing closed-loop of PDCA cycle for continuous improvement
Service	<ol style="list-style-type: none"> 1. Worldwide RMA service coverage more than 80 service centers globally
Capability	<ol style="list-style-type: none"> 1. Customization capability 2. Direct field application engineer support and quick response 3. Customized manufacturing process, quality control and delivery solutions

Company Profile	1	Micro-ATX Series	17
Index	2	uATX-H370A	17
QBiX Series	3	uATX-H310A	17
QBiX-WHLA8265H-A1	3	uATX-H110A	17
QBiX-WHLA8145H-A1	3	uATX-H81A	18
QBiX-KBLA7100H-A1	3	uATX-RYZEN	18
QBiX2-GLKA5005H-A1	4	Mini-ITX Series	19
QBiX-GLKA5005H-A1	4	mITX-Q370A	19
QBiX-GLKA4125-A1	4	mITX-H310A	19
QBiX-APLA4200H-A1	4	mITX-Q170A	19
QBiX-Pro Series	5	mITX-H110A	20
QBiX-Pro-WHLA8265H-A1	5	mITX-H110B	20
QBiX-Pro-WHLA8145H-A2	5	mITX-4105A	21
QBiX2-Pro-KBLB7100H-A1	5	mITX-4205A	21
QBiX-Pro-KBLB7200H-A2	6	mITX-1900A	22
QBiX-Pro-KBLB7100H-A1	6	mITX-1605A	22
QBiX-Pro-KBLB7100H-B1	6	Thin Mini-ITX Series	23
QBiX-Pro-KBLB3965H-A1	7	iTXL-Q370A	23
QBiX2-Pro-APLB4200H-A1	7	iTXL-Q170A	23
QBiX-Pro-APLB4200H-A1	7	iTXL-H110C	23
QBiX-Pro-APLB4200H-B1	8	iTXL-6100B	24
QBiX-Pro-BYTA1900H-A1	8	iTXL-3955A	24
QBiX-Pro-KBLB7100HD-A1	9	iTXL-3350A	24
QBiX-Pro-GLKA5005HD-A1	9	iTXL-1900A	24
QBiX-Pro-BYTA1900HD-A1	9	QBiP Series (3.5" SBC)	25
QBiX-Pro-AMDA1605H-A1	10	QBiP-8565A/ QBiP-8265A/ QBiP-8145A	25
QBiX-Pro-AMDA1606H-A1	10	QBiP-7600A/ QBiP-7200A/ QBiP-7100A	25
QBiX-Jumbo Series	11	QBiP-3965A	25
QBiX-JMB-CFLA310H-A1	11	QBiP-4200A	26
QBiX-JMB-CFLA310HG-A1	11	QBiP-4200B/ QBiP-4200C/ QBiP-3350A	26
QBiX-JWB-SKYA110H-A1	12	QBiP-E3940A	26
QBiX-JWB-SKYB110H-A1	12	QBiP-1900A	27
QBiX-Plus Series	13	QBiP-1605A	27
QBiX-Plus-KBLA7100-A1	13	QBiP-1606A	27
QBiX-Plus-APLA3450-A1	13	QBiP Wide Temperature Series	28
Embedded IoT Series	14	QBiP-7200AT	28
EL-30-4200 (rev. 1.0)	14	QBiP-7100AT	28
EL-30-3350 (rev. 1.0)	14	QBiP-E3940AT	28
EL-20-3710-32G (rev. 1.0)	14	QBiP-1900AT	28
EL-20-3060-32G (rev. 1.0)	14	QBi Series (10 x 10 Embedded Compact Board) ...	29
SDM-L Series	15	QBi-8565A/ QBi-8265A/ QBi-8145A	29
SDM-7300L/ SDM-7100L	15	QBi-7100B	29
SDM-4000L	15	QBi-3965B	29
SDM-3350L-QV	15	QBi-5005A/ QBi-5005B/ QBi-4000B	30
SDM-3350L-HW	16	QBi-4200A/ QBi-4200B	30
EXTERNAL GPU KITS	16		
External Discrete GPU BOX Kit	16		

QBiX Series



QBiX Series

Model Name	QBiX-WHLA8265H-A1	QBiX-WHLA8145H-A1	QBiX-KBLA7100H-A1
Dimension	138W x 118D x 74.2H (mm)	138W x 118D x 74.2H (mm)	138W x 118D x 74.2H (mm)
CPU	Intel® Core™ i5-8265U Processor, 14nm, 4 cores, 8 threads, up to 3.9 GHz, TDP 15W	Intel® Core™ i3-8145UE Processor, 14nm, 2 cores, 4 threads, up to 3.9 GHz, TDP 15W	Intel® Core™ i3-7100U Processor, 14nm, 2 cores, 4 threads, 2.4 GHz, TDP 15W
Chipset	SOC	SOC	SOC
Memory	2 x DDR4 SO-DIMM sockets, Max. Capacity 32 GB, Support Dual Channel DDR4 2400 MHz	2 x DDR4 SO-DIMM sockets, Max. Capacity 32 GB, Support Dual Channel DDR4 2400 MHz	2 x DDR4 SO-DIMM sockets, Max. Capacity 32 GB, Support Dual Channel DDR4 2133 MHz
Ethernet	2 x GbE LAN ports (Intel® I219V and Realtek® RTL8111HS)	2 x GbE LAN ports (Intel® I219V and Realtek® RTL8111HS)	1 x GbE LAN port (Intel® I219V)
Graphic	Integrated Graphics Processor - Intel® UHD Graphics 620: 2 x HDMI 1.4 2 independent display outputs	Integrated Graphics Processor - Intel® UHD Graphics 620: 2 x HDMI 1.4 2 independent display outputs	Integrated Graphics Processor - Intel® HD Graphics 620: 1 x HDMI 2.0, 1 x mini Display Port 2 independent display outputs
Audio	Realtek® ALC269	Realtek® ALC269	Intel® Integrated Audio
Storage	1 x 2.5" HDD/SSD(SATA 6Gb/s)	1 x 2.5" HDD/SSD(SATA 6Gb/s)	1 x 2.5" HDD/SSD(SATA 6Gb/s)
Expansion Slots	1 x 2280 M.2 M-Key (PCIe x4, SATA 6Gb/s) 1 x 2230 M.2 E-Key 1 x Vertical USB 3.0	1 x 2280 M.2 M-Key (PCIe x4, SATA 6Gb/s) 1 x 2230 M.2 E-Key 1 x Vertical USB 3.0	1 x 2280 M.2 M-Key (PCIe x4, SATA 6Gb/s) 1 x 2230 M.2 E-Key
Front I/O	2 x USB 3.1 Gen2 1 x Power switch 2 x External Antenna Holes (Optional) 1 x Power & HDD LED 1 x COM port (RS-232/422/485)	2 x USB 3.1 Gen2 1 x Power switch 2 x External Antenna Holes (Optional) 1 x Power & HDD LED 1 x COM port (RS-232/422/485)	2 x USB 3.0 1 x Power switch 2 x External Antenna Holes (Optional) 1 x Power LED 1 x HDD LED
Rear I/O	2 x HDMI 2 x RJ45 LAN ports 2 x USB 3.1 Gen2 1 x Screw type DC Jack	2 x HDMI 2 x RJ45 LAN ports 2 x USB 3.1 Gen2 1 x Screw type DC Jack	1 x RJ45 LAN port 2 x USB 3.0 1 x HDMI 1 x Mini Display port 1 x COM port (RS-232) 1 x Screw type DC Jack
Side I/O	—	—	—
TPM	—	—	—
Power	+9V~36VDC (Adapter 19V/90W)	+9V~36VDC (Adapter 19V/90W)	+12V~24VDC (Adapter 19V/65W)
Operating Temp.	0°C to 50°C	0°C to 50°C	0°C to 50°C
Mounting	Wall mount	Wall mount	Wall mount
Ordering Information	6BQB8265AMR-SI (Box packing)	6BQB8145AMR-SI (Box packing)	6BCKAAMR-SI (Box packing)

QBiX Series



Model Name	QBiX2-GLKA5005H-A1	QBiX-GLKA5005H-A1	QBiX-GLKA4125-A1	QBiX-APLA4200H-A1
Dimension	118W x 109.4D x 74.4H (mm)	118W x 109.4D x 54.4H (mm)	118W x 109.4D x 44.4H (mm)	118W x 109.4D x 54.4H (mm)
CPU	Intel® Pentium® Silver J5005 Processor, 14nm ,4 cores, 4 threads, up to 2.8 GHz, TDP 10W	Intel® Pentium® Silver J5005 Processor, 14nm, 4 cores, 4 threads, up to 2.8 GHz, TDP 10W	Intel® Celeron® Processor J4125, 14nm, 4 cores, 4 threads, up to 2.7 GHz, TDP 10W	Intel® Pentium® Processor N4200, 14nm, 4 cores, 4 threads, up to 2.5 GHz, TDP 6W
Chipset	SOC	SOC	SOC	SOC
Memory	1 x DDR4 SO-DIMM socket, Max. Capacity 8 GB, Support Single Channel DDR4 2400 MHz	1 x DDR4 SO-DIMM socket, Max. Capacity 8 GB, Support Single Channel DDR4 2400 MHz	1 x DDR4 SO-DIMM socket, Max. Capacity 8 GB, Support Single Channel DDR4 2400 MHz	1 x DDR3L SO-DIMM socket, Max. Capacity 8 GB, Support Single Channel DDR3L 1866 MHz
Ethernet	1 x GbE LAN port (Realtek® RTL8111HS)	1 x GbE LAN port (Realtek® RTL8111HS)	2 x GbE LAN ports (Intel® I211AT and Realtek® RTL8111HS)	1 x GbE LAN port (Realtek® RTL8111HS)
Graphic	Integrated Graphics Processor - Intel® UHD Graphics 605: 1 x HDMI 1.4 1 x VGA 2 independent display outputs	Integrated Graphics Processor - Intel® UHD Graphics 605: 1 x HDMI 1.4 1 x VGA 2 independent display outputs	Integrated Graphics Processor - Intel® UHD Graphics 600: 2 x HDMI 1.4 2 independent display outputs	Integrated Graphics Processor - Intel® HD Graphics 505: 1 x HDMI 1.4 1 x VGA 2 independent display outputs
Audio	Realtek® ALC891	Realtek® ALC891	Realtek® ALC891	Realtek®ALC255
Storage	1 x 2.5" HDD/SSD (SATA 6Gb/s)	1 x 2.5" HDD/SSD (SATA 6Gb/s)	—	1 x 2.5" HDD/SSD (SATA 6Gb/s)
Expansion Slots	1 x 2230 M.2 E-Key	1 x 2230 M.2 E-Key	1 x 2280 M.2 M-Key (SATA 6Gb/s) 1 x 2230 M.2 E-Key	1 x 2230 M.2 E-Key
Front I/O	2 x USB 3.0 2 x USB 2.0 3 x COM ports (RS-232) 1 x Headphone Jack 1 x Microphone Jack 1 x Power button with LED	2 x USB 3.0 1 x COM port (RS-232) 1 x Headphone Jack 1 x Microphone Jack 1 x Power button with LED	2 x USB3.0 1 x COM Port (RS-232) 1 x Headphone Jack 1 x Power button with LED	2 x USB 3.0 1 x Power button with LED 1 x Headphone Jack
Rear I/O	1 x RJ45 LAN port 2 x USB 3.0 1 x HDMI 1 x VGA 2 x External Antenna Holes (Optional) 2 x COM ports (RS-232) 1 x Screw type DC Jack	1 x RJ45 LAN port 2 x USB 3.0 1 x HDMI 1 x VGA 2 x External Antenna Holes (Optional)	2 x RJ45 LAN ports 2 x USB 3.0 2 x HDMI 2 x External Antenna Hole (Optional) 1 x Screw type DC Jack	1 x RJ45 LAN port 2 x USB 3.0 1 x HDMI 1 x VGA 2 x External Antenna Holes (Optional)
Side I/O	2 x USB 2.0 1 x RJ11 Cash Draw	1 x DC Jack	—	1 x DC Jack
TPM	—	—	—	—
Power	+19VDC (Adapter 19V/65W)	+12V~19VDC (Adapter 19V/65W)	+12V~19VDC (Adapter 19V/65W)	+12V~24VDC (Adapter 19V/65W)
Operating Temp.	0°C to 50°C	0°C to 50°C	0°C to 50°C	0°C to 50°C
Mounting	VESA 75/100	VESA 75/100	VESA 75/100	VESA 75/100
Ordering Information	6BQ25005AMR-SI (Box packing)	6BCGAAMR-SI (Box packing)	TBD	6BCBAAMR-SI (Box packing)

QBiX-Pro Series



QBiX-Pro Series

Model Name	QBiX-Pro-WHLA8265H-A1	QBiX-Pro-WHLA8145H-A2	QBiX2-Pro-KBLB7100H-A1
Dimension	178W x 125D x 52.7H (mm)	178W x 125D x 52.7H (mm)	178W x 125D x 90.2H (mm)
CPU	Intel® Core™ i5-8265U Processor, 14nm, 4 cores, 8 threads, up to 3.9 GHz, TDP 15W	Intel® Core™ i3-8145UE Processor, 14nm, 2 cores, 4 threads, up to 3.9 GHz, TDP 15W	Intel® Core™ i3-7100U Processor, 14nm, 2 cores, 4 threads, 2.4 GHz, TDP 15W
Chipset	SOC	SOC	SOC
Memory	2 x DDR4 SO-DIMM sockets, Max. Capacity 32 GB, Support Dual Channel DDR4 2400 MHz	2 x DDR4 SO-DIMM sockets, Max. Capacity 32 GB, Support Dual Channel DDR4 2400 MHz	2 x DDR4 SO-DIMM sockets, Max. Capacity 32 GB, Support Dual Channel DDR4 2133 MHz
Ethernet	2 x GbE LAN ports (Intel® I219V and Intel® I211AT)	2 x GbE LAN ports (Intel® I219V and Intel® I211AT)	2 x GbE LAN ports (Intel® I219V and Intel® I211AT)
Graphic	Integrated Graphics Processor - Intel® UHD Graphics 620: 2 x HDMI 1.4 2 independent display outputs	Integrated Graphics Processor - Intel® UHD Graphics 620: 2 x HDMI 1.4 2 independent display outputs	Integrated Graphics Processor - Intel® HD Graphics 620: 1 x HDMI 2.0, 1 x Display Port 2 independent display outputs
Audio	Realtek® ALC269	Realtek® ALC269	Realtek® ALC269
Storage	1 x 2.5" HDD/SSD (SATA 6Gb/s)	1 x 2.5" HDD/SSD (SATA 6Gb/s)	1 x 2.5" HDD/SSD (SATA 6Gb/s)
Expansion Slots	1 x 2280 M.2 M-Key (PCIe x4, SATA 6Gb/s) 1 x 2230 M.2 E-Key 1 x Full-size Mini PCIe with SIM slot	1 x 2280 M.2 M-Key (PCIe x4, SATA 6Gb/s) 1 x 2230 M.2 E-Key 1 x Full-size Mini PCIe with SIM slot	1 x 2280 M.2 M-Key (PCIe x4, SATA 6Gb/s) 1 x 2230 M.2 E-Key 1 x Full-size Mini PCIe with SIM slot
Front I/O	2 x RJ45 LAN ports 4 x USB 3.1 Gen2 2 x HDMI 1 x Power switch 1 x Power & HDD LED 1 x COM port (RS-232/422/485 & RI/5V/12V)	2 x RJ45 LAN ports 4 x USB 3.1 Gen2 2 x HDMI 1 x Power switch 1 x Power & HDD LED 1 x COM port (RS-232/422/485 & RI/5V/12V)	2 x RJ45 LAN ports 4 x USB 3.0 1 x HDMI 1 x Display Port 1 x Power switch 1 x Power & HDD LED 1 x COM port (RS-232/422/485 & RI/5V/12V) 4 x COM ports (RS-232/422/485)
Rear I/O	2 x USB 2.0 2 x COM ports (RS-232) 1 x GPIO (8 bits) 1 x Headphone Jack 1 x 3-pin Terminal Block	2 x USB 2.0 2 x COM ports (RS-232) 1 x GPIO (8 bits) 1 x Headphone Jack 1 x DC Jack Screw Type	4 x USB 2.0 3 x COM ports (RS-232) 1 x GPIO (8 bits), SMBUS & Remote control 1 x 3-pin Terminal Block
Side I/O	2 x External Antenna Holes (Optional)	2 x External Antenna Holes (Optional)	2 x External Antenna Holes (Optional)
TPM	—	—	—
Power	+9V~36VDC (Full Range)	+9V~36VDC (Adapter 19V/90W)	+9V~36VDC (Full Range)
Operating Temp.	0°C to 50°C	0°C to 50°C	0°C to 50°C
Mounting	Wall mount (Optional)	Wall mount (Optional)	Wall mount (Optional)
Ordering Information	6BQP8265AMR-SI (Box packing)	6BQP8145AMR-SI (Box packing)	9BQD7100AMR-SI (Box packing)
Components	—	—	Memory: 4GB DDR4 SO-DIMM Storage: 128GB M.2 SSD

QBiX-Pro Series



Model Name	QBiX-Pro-KBLB7200H-A2	QBiX-Pro-KBLB7100H-A1	QBiX-Pro-KBLB7100H-B1
Dimension	178W x 125D x 52.7H (mm)	178W x 125D x 52.7H (mm)	178W x 125D x 52.7H (mm)
CPU	Intel® Core™ i5-7200U Processor, 14nm, 2 cores, 4 threads, up to 3.1 GHz, TDP 15W	Intel® Core™ i3-7100U Processor, 14nm, 2 cores, 4 threads, up to 2.4 GHz, TDP 15W	Intel® Core™ i3-7100U Processor, 14nm, 2 cores, 4 threads, up to 2.4 GHz, TDP 15W
Chipset	SOC	SOC	SOC
Memory	2 x DDR4 SO-DIMM sockets, Max. Capacity 32 GB, Support Dual Channel DDR4 2133 MHz	2 x DDR4 SO-DIMM sockets, Max. Capacity 32 GB, Support Dual Channel DDR4 2133 MHz	2 x DDR4 SO-DIMM sockets, Max. Capacity 32 GB, Support Dual Channel DDR4 2133 MHz
Ethernet	2 x GbE LAN ports (Intel® I219V and Intel® I211AT)	2 x GbE LAN ports (Intel® I219V and Intel® I211AT)	2 x GbE LAN ports (Intel® I219V and Intel® I211AT)
Graphic	Integrated Graphics Processor - Intel® HD Graphics 620: 1 x HDMI 2.0, 1 x Display Port 2 independent display outputs	Integrated Graphics Processor - Intel® HD Graphics 620: 1 x HDMI 2.0, 1 x Display Port 2 independent display outputs	Integrated Graphics Processor - Intel® HD Graphics 620: 1 x HDMI 2.0, 1 x Display Port 2 independent display outputs
Audio	Realtek® ALC269	Realtek® ALC269	Realtek® ALC269
Storage	1 x 2.5" HDD/SSD (SATA 6Gb/s)	1 x 2.5" HDD/SSD (SATA 6Gb/s)	1 x 2.5" HDD/SSD (SATA 6Gb/s)
Expansion Slots	1 x 2280 M.2 M-Key (PCIe x4, SATA 6Gb/s) 1 x 2230 M.2 E-Key 1 x Full-size Mini PCIe with SIM slot	1 x 2280 M.2 M-Key (PCIe x4, SATA 6Gb/s) 1 x 2230 M.2 E-Key 1 x Full-size Mini PCIe with SIM slot	1 x 2280 M.2 M-Key (PCIe x4, SATA 6Gb/s) 1 x 2230 M.2 E-Key 1 x Full-size Mini PCIe with SIM slot
Front I/O	2 x RJ45 LAN ports 4 x USB 3.0 1 x HDMI 1 x Display Port 1 x Power switch 1 x Power & HDD LED 1 x COM port (RS-232/422/485 & RI/5V/12V)	2 x RJ45 LAN ports 4 x USB 3.0 1 x HDMI 1 x Display Port 1 x Power switch 1 x Power & HDD LED 1 x COM port (RS-232/422/485 & RI/5V/12V)	2 x RJ45 LAN ports 4 x USB 3.0 1 x HDMI 1 x Display Port 1 x Power switch 1 x Power & HDD LED 1 x COM port (RS-232/422/485 & RI/5V/12V)
Rear I/O	2 x USB 2.0 3 x COM ports (RS-232) 1 x Screw type DC Jack	2 x USB 2.0 3 x COM ports (RS-232) 1 x 3-pin Terminal Block	2 x USB 2.0 2 x COM ports (RS-232) 1 x GPIO (8 bits) 1 x Headphone Jack 1 x 3-pin Terminal Block
Side I/O	2 x External Antenna Holes (Optional)	2 x External Antenna Holes (Optional)	2 x External Antenna Holes (Optional)
TPM	—	—	—
Power	+9V~36VDC (Adapter 19V/65W)	+9V~36VDC (Full Range)	+9V~36VDC (Full Range)
Operating Temp.	0°C to 50°C	0°C to 50°C	0°C to 50°C
Mounting	Wall mount (Optional)	Wall mount (Optional)	Wall mount (Optional)
Ordering Information	6BQP7200AMR-SI (Box packing)	6BCKACMR-SI (Box packing)	6BQP7100AMR-SI (Box packing)
Components	—	—	—

QBiX-Pro Series



QBiX-Pro Series

Model Name	QBiX-Pro-KBLB3965H-A1	QBiX2-Pro-APLB4200H-A1	QBiX-Pro-APLB4200H-A1
Dimension	178W x 125D x 52.7H (mm)	178W x 125D x 90.2H (mm)	178W x 125D x 52.7H (mm)
CPU	Intel® Celeron® Processor 3965U, 14nm, 2 cores, 2 threads, up to 2.2 GHz, TDP 15W	Intel® Pentium® Processor N4200, 14nm, 4 cores, 4 threads, up to 2.5 GHz, TDP 6W	Intel® Pentium® Processor N4200, 14nm, 4 cores, 4 threads, up to 2.5 GHz, TDP 6W
Chipset	SOC	SOC	SOC
Memory	2 x DDR4 SO-DIMM sockets, Max. Capacity 32 GB, Support Dual Channel DDR4 2133 MHz	2 x DDR3L SO-DIMM sockets, Max. Capacity 8 GB, Support Dual Channel DDR3L 1866 MHz	2 x DDR3L SO-DIMM sockets, Max. Capacity 8 GB, Support Dual Channel DDR3L 1866 MHz
Ethernet	2 x GbE LAN ports (Intel® I219V and Intel® I211AT)	2 x GbE LAN ports (Intel® I211AT)	2 x GbE LAN ports (Intel® I211AT)
Graphic	Integrated Graphics Processor - Intel® HD Graphics 610: 1 x HDMI 2.0, 1 x Display Port 2 independent display outputs	Integrated Graphics Processor - Intel® HD Graphics 505: 1 x HDMI 1.4, 1 x VGA 2 independent display outputs	Integrated Graphics Processor - Intel® HD Graphics 505: 1 x HDMI 1.4, 1 x VGA 2 independent display outputs
Audio	Realtek® ALC269	Realtek® ALC269	Realtek® ALC269
Storage	1 x 2.5" HDD/SSD (SATA 6Gb/s)	1 x 2.5" HDD/SSD (SATA 6Gb/s)	1 x 2.5" HDD/SSD (SATA 6Gb/s)
Expansion Slots	1 x 2280 M.2 M-Key (SATA 6Gb/s) 1 x 2230 M.2 E-Key 1 x Full-size Mini PCIe with SIM slot	1 x 2242 M.2 M-Key (SATA 6Gb/s) 1 x Full-size Mini PCIe with SIM slot	1 x 2242 M.2 M-Key (SATA 6Gb/s) 1 x Full-size Mini PCIe with SIM slot
Front I/O	2 x RJ45 LAN ports 4 x USB 3.0 1 x HDMI 1 x Display Port 1 x Power switch 1 x Power & HDD LED 1 x COM port (RS-232/422/485 & RI/5V/12V)	2 x RJ45 LAN ports 2 x USB 3.0 1 x HDMI 1 x VGA 1 x Power switch 1 x Power & HDD LED 1 x Headphone Jack 4 x COM ports (RS-232/422/485 & RI/5V/12V)	2 x RJ45 LAN ports 2 x USB 3.0 1 x HDMI 1 x VGA 1 x Power switch 1 x Power & HDD LED 1 x Headphone Jack
Rear I/O	2 x USB 2.0 3 x COM ports (RS-232) 1 x 3-pin Terminal Block	6 x USB 2.0 1 x COM port (RS-232/422/485 & RI/5V/12V) 3 x COM ports (RS-232) 1 x GPIO (8 bits), SMBUS & Remote control 1 x 3-pin Terminal Block	2 x USB 2.0 1 x COM port (RS-232/422/485 & RI/5V/12V) 3 x COM ports (RS-232) 1 x 3-pin Terminal Block
Side I/O	2 x External Antenna Holes (Optional)	2 x External Antenna Holes (Optional)	2 x External Antenna Holes (Optional)
TPM	—	—	—
Power	+9V~36VDC (Full Range)	+9V~36VDC (Full Range)	+9V~36VDC (Full Range)
Operating Temp.	0°C to 50°C	0°C to 50°C	0°C to 50°C
Mounting	Wall mount (Optional)	Wall mount (Optional)	Wall mount (Optional)
Ordering Information	6BQP3965AMR-SI (Box packing)	9BQD4200AMR-SI (Box packing)	6BCBABMR-SI (Box packing)
Built-in Components	—	Memory: 4GB DDR3L SO-DIMM Storage: 128GB M.2 SSD	—

QBiX-Pro Series



Model Name	QBiX-Pro-APLB4200H-B1	QBiX-Pro-BYTA1900H-A1
Dimension	178W x 125D x 52.7H (mm)	178W x 125D x 52.7H (mm)
CPU	Intel® Pentium® Processor N4200, 14nm, 4 cores, 4 threads, up to 2.5 GHz, TDP 6W	Intel® Celeron® Processor J1900, 22nm, 4 cores, 4 threads, up to 2.42 GHz, TDP 10W
Chipset	SOC	SOC
Memory	2 x DDR3L SO-DIMM sockets, Max. Capacity 8 GB, Support Dual Channel DDR3L 1866 MHz	1 x DDR3L SO-DIMM socket, Max. Capacity 8 GB, Support Single Channel DDR3L 1333 MHz
Ethernet	2 x GbE LAN ports (Intel® I211AT)	2 x GbE LAN ports (Intel® I211AT)
Graphic	Integrated Graphics Processor - Intel® HD Graphics 505: 1 x HDMI 1.4 1 x VGA 2 independent display outputs	Integrated Graphics Processor - Intel® HD Graphics: 1 x HDMI 1.4 1 x VGA 2 independent display outputs
Audio	Realtek® ALC269	Realtek® ALC269
Storage	1 x 2.5" HDD/SSD (SATA 6Gb/s)	1 x 2.5" HDD/SSD (SATA 3Gb/s)
Expansion Slots	1 x 2242 M.2 M-Key (SATA 6Gb/s) 1 x Full-size Mini PCIe with SIM slot	1 x 2280 M.2 M-Key (SATA 3Gb/s) 1 x Full-size Mini PCIe with SIM slot
Front I/O	2 x RJ45 LAN ports 2 x USB 3.0 1 x HDMI 1 x VGA 1 x Power switch 1 x Power & HDD LED 1 x Headphone Jack	2 x RJ45 LAN ports 1 x USB 3.0 1 x USB 2.0 1 x HDMI 1 x VGA 1 x Power switch 1 x Power & HDD LED 1 x Headphone Jack
Rear I/O	2 x USB 2.0 1 x COM port (RS-232/422/485 & RI/5V/12V) 2 x COM ports (RS-232) 1 x GPIO (8 bits) 1 x 3-pin Terminal Block	2 x USB 2.0 1 x COM port (RS-232 & RI/5V/12V) 3 x COM ports (RS-232) 1 x 3-pin Terminal Block
Side I/O	2 x External Antenna Holes (Optional)	2 x External Antenna Holes (Optional)
TPM	—	—
Power	+9V~36VDC (Full Range)	+9V~36VDC (Full Range)
Operating Temp.	0°C to 50°C	0°C to 50°C
Mounting	Wall mount (Optional)	Wall mount (Optional)
Ordering Information	6BQP4200AMR-SI (Box packing)	6BQP1900AMR-SI (Box packing)
Built-in Components	—	—

QBiX-Pro Series



Coming Soon...



Coming Soon...

QBiX-Pro Series/
QBiX-Plus Series

Model Name	QBiX-Pro-KBLB7100HD-A1	QBiX-Pro-GLKA5005HD-A1	QBiX-Pro-BYTA1900HD-A1
Dimension	160W x 118D x 62.6H (mm)	160W x 118D x 62.6H (mm)	160W x 118D x 62.6H (mm)
CPU	Intel® Core™ i3-7100U Processor, 14nm, 2 cores, 4 threads, up to 2.40 GHz, TDP 15W	Intel® Pentium® Silver J5005 Processor, 14nm, 4 cores, 4 threads, up to 2.8 GHz, TDP 10W	Intel® Celeron® Processor J1900, 22nm, 4 cores, 4 threads, up to 2.42 GHz, TDP 10W
Chipset	SOC	SOC	SOC
Memory	2 x DDR4 SO-DIMM sockets, Max. Capacity 32 GB, Support Dual Channel DDR4 2133 MHz	1 x DDR4 SO-DIMM socket, Max. Capacity 8 GB, Support Single Channel DDR4 2400 MHz	1 x DDR3L SO-DIMM socket, Max. Capacity 8 GB, Support Single Channel DDR3L 1333 MHz
Ethernet	2 x GbE LAN ports (Intel® I219V and Intel® I211AT)	2 x GbE LAN ports (Intel® I211AT)	2 x GbE LAN ports (Intel® I211AT)
Graphic	Integrated Graphics Processor - Intel® HD Graphics 620 support 1 x HDMI 2.0 1 x Display Port 2 independent display outputs	Integrated Graphics Processor - Intel® UHD Graphics 605: 1 x HDMI 1.4 1 x VGA 2 independent display outputs	Integrated Graphics Processor - Intel® HD Graphics: 1 x HDMI 1.4 1 x VGA 2 independent display outputs
Audio	Realtek® ALC269	Realtek® ALC269	Realtek® ALC269
Storage	1 x 2.5" HDD/SSD (SATA 6Gb/s)	1 x 2.5" HDD/SSD (SATA 6Gb/s)	1 x 2.5" HDD/SSD (SATA 3Gb/s)
Expansion Slots	1 x 2280 M.2 M-Key (PCIe x4, SATA 6Gb/s) 1 x 2230 M.2 E-Key 1 x Full-size Mini PCIe with SIM slot	1 x 2280 M.2 M-Key (SATA 6Gb/s) 1 x 2230 M.2 E-Key 1 x Full-size Mini PCIe with SIM slot	1 x 2280 M.2 M-Key (SATA 3Gb/s) 1 x Full-size Mini PCIe with SIM slot
Front I/O	2 x RJ45 LAN ports 4 x USB 3.0 2 x USB 2.0 1 x HDMI 1 x Display Port 1 x COM port (RS-232/422/485 & RI/5V/12V) 2 x COM ports (RS-232) 1 x Power switch with LED 1 x HDD LED 1 x Headphone Jack	2 x RJ45 LAN ports 4 x USB 3.0 1 x HDMI 1 x VGA 2 x COM ports (RS-232/422/485 & RI/5V/12V) 1 x Power switch with LED 1 x WiFi/HDD LED 1 x Remote control pin 1 x Headphone Jack 1 x External Antenna Hole (Optional)	2 x RJ45 LAN ports 1 x USB 3.0 2 x USB 2.0 1 x HDMI 1 x VGA 1 x COM port (RS-232/422/485 & RI/5V/12V) 1 x COM port (RS-232) 1 x Power button 1 x HDD LED 1 x Headphone Jack
Rear I/O	1 x Din Rail Mounting Support	1 x Din Rail Mounting Support	1 x Din Rail Mounting Support
Side I/O	1 x GPIO (8 bits) 1 x 3-pin Terminal Block 3 x External Antenna Holes (Optional)	1 x GPIO (8 bits) 1 x 3-pin Terminal Block 2 x COM ports (RS-232/422/485) 2 x External Antenna Holes (Optional)	1 x GPIO (8 bits) 1 x 3-pin Terminal Block 3 x External Antenna Holes (Optional)
TPM	—	—	—
Power	+9V~36VDC (Full Range)	+9V~36VDC (Full Range)	+9V~36VDC (Full Range)
Operating Temp.	0°C to 50°C	0°C to 50°C	0°C to 50°C
Mounting	DIN Rail/ Wall mount (Optional)	DIN Rail/ Wall mount (Optional)	DIN Rail/ Wall mount (Optional)
Ordering Information	TBD	TBD	TBD
Built-in Components	—	—	—

QBiX-Pro Series



Model Name	QBiX-Pro-AMDA1605H-A1	QBiX-Pro-AMDA1606H-A1
Dimension	178W x 125D x 52.7H (mm)	178W x 125D x 52.7H (mm)
CPU	AMD® RYZEN™ Embedded V1605B, 14nm, 4 cores, 8 threads, 2.0 GHz, up to 3.6 GHz, TDP 25W	AMD® RYZEN™ Embedded R1606G, 14nm, 2 cores, 4 threads, 2.6 GHz, up to 3.5 GHz, TDP 25W
Chipset	SOC	SOC
Memory	2 x DDR4 SO-DIMM sockets, Max. Capacity 32 GB, Support Dual Channel DDR4 2400 MHz	2 x DDR4 SO-DIMM sockets, Max. Capacity 32 GB, Support Dual Channel DDR4 2400 MHz
Ethernet	2 x GbE LAN port (Realtek® RTL8111HS)	2 x GbE LAN port (Realtek® RTL8111HS)
Graphic	Integrated Graphics Processor- AMD® Radeon™ Vega 8 Graphics: 4 x HDMI 2.0 4 independent display outputs	Integrated Graphics Processor- AMD® Radeon™ Vega 3 Graphics: 3 x HDMI 2.0 3 independent display outputs
Audio	Realtek® ALC269	Realtek® ALC269
Storage	1 x 2.5" HDD/SSD (SATA 6Gb/s)	1 x 2.5" HDD/SSD (SATA 6Gb/s)
Expansion Slots	1 x 2280 M.2 M-Key (PCIe x4, SATA 6Gb/s) 1 x 2230 M.2 E-Key 1 x Full-size Mini PCIe with SIM slot	1 x 2280 M.2 M-Key (PCIe x4, SATA 6Gb/s) 1 x 2230 M.2 E-Key 1 x Full-size Mini PCIe with SIM slot
Front I/O	2 x RJ45 LAN ports 2 x USB 3.0 4 x HDMI 1 x Power switch 1 x Power & HDD LED	2 x RJ45 LAN ports 2 x USB 3.0 3 x HDMI 1 x Power switch 1 x Power & HDD LED
Rear I/O	2 x USB 2.0 2 x COM ports (RS-232/422/485 & RI/5V/12V) 2 x COM ports (RS-232) 1 x Screw type DC Jack	2 x USB 2.0 2 x COM ports (RS-232/422/485 & RI/5V/12V) 1 x GPIO (8 bits) 1 x Headphone Jack 1 x Screw type DC Jack
Side I/O	2 x External Antenna Holes (Optional)	2 x External Antenna Holes (Optional)
TPM	Onboard TPM 2.0 security chip INFINEON SLB9665TT2.0	Onboard TPM 2.0 security chip INFINEON SLB9665TT2.0
Power	+9V~36VDC (Adapter 19V/65W)	+9V~36VDC (Adapter 19V/65W)
Operating Temp.	0°C to 50°C	0°C to 50°C
Mounting	Wall mount (Optional)	Wall mount (Optional)
Ordering Information	6BQP1605AMR-SI (Box packing)	6BQP1606AMR-SI (Box packing)

QBiX-Jumbo Series



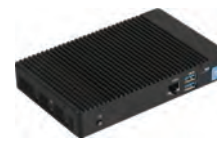
Model Name	QBiX-JMB-CFLA310H-A1	QBiX-JMB-CFLA310HG-A1
Dimension	224W x 257D x 77H (mm)	224W x 343D x 146H (mm) (Discrete GFX Max. 250W)
CPU	Support for 8th/9th Generation Intel® Core™ i7/ i5/ i3 IOTG processors in the LGA1151 package, TDP under 65W	Support for 8th/9th Generation Intel® Core™ i7/ i5/ i3 IOTG processors in the LGA1151 package, TDP under 65W
Chipset	Intel® H310 Chipset	Intel® H310 Chipset
Memory	2 x DDR4 SO-DIMM sockets, Max. Capacity 32 GB, Support Dual Channel DDR4 2666/2400 MHz	2 x DDR4 SO-DIMM sockets, Max. Capacity 32 GB, Support Dual Channel DDR4 2666/2400 MHz
Ethernet	4 x GbE LAN ports (1 x Intel® I219V and 3 x Intel® I211AT)	4 x GbE LAN ports (1 x Intel® I219V and 3 x Intel® I211AT)
Graphic	Integrated Graphics Processor - Intel® HD Graphics: 1 x Display Port 1 x DVI-D 1 x VGA 2 independent display outputs	Integrated Graphics Processor - Intel® HD Graphics: 1 x Display Port 1 x DVI-D 1 x VGA 2 independent display outputs
Audio	Realtek® ALC269	Realtek® ALC269
Storage	3 x 2.5" HDD/SSD (SATA 6Gb/s) 1 x 2280 M.2 M-Key (SATA 6Gb/s) 1 x 2230 M.2 E-Key	3 x 2.5" HDD/SSD (SATA 6Gb/s) 1 x 2280 M.2 M-Key (SATA 6Gb/s) 1 x 2230 M.2 E-Key
Expansion Slots	1 x Full-size Mini PCIe with SIM slot	1 x Full-size Mini PCIe with SIM slot 1 x PCIe x1 (Gen3 x1) 1 x PCIe x16 (Gen3 x16)
Front I/O	1 x Power Switch/ Power/ HDD LED 3 x Audio Jacks (Line in, Line out, Mic in) 1 x Display Port 1 x DVI-D 1 x VGA 2 x COM ports (RS-232/422/485 & RI/5V/12V) 2 x COM ports (RS-232) 4 x RJ45 LAN ports 4 x USB 3.0 4 x USB 2.0 1 x 4-pin Terminal Block 2 x External Antenna Hole (Optional)	1 x Power Switch/ Power/ HDD LED 3 x Audio Jacks (Line in, Line out, Mic in) 1 x Display Port 1 x DVI-D 1 x VGA 2 x COM ports (RS-232/422/485 & RI/5V/12V) 2 x COM ports (RS-232) 4 x RJ45 LAN ports 4 x USB 3.0 4 x USB 2.0 1 x 4-pin Terminal Block 2 x External Antenna Hole (Optional)
Rear I/O	—	—
Power	+12V~48VDC	+12V~48VDC (+24V~48VDC: Discrete GFX Support)
Operating Temp.	-20°C to 50°C (CPU TDP 65W) -20°C to 60°C (CPU TDP 35W)	-20°C to 50°C (CPU TDP 65W) -20°C to 60°C (CPU TDP 35W)
Ordering Information	TBD	TBD
Build in Components	—	—

QBiX-Jumbo Series



Model Name	QBiX-JWB-SKYA110H-A1	QBiX-JWB-SKYB110H-A1
Dimension	273W x 203D x 91H(mm)	273W x 203D x 91H(mm)
CPU	Supports for 6/7th Generation Intel® Core™ i7/ i5/ i3, Pentium® & Celeron® processors, TDP under 35W	Supports for 6/7th Generation Intel® Core™ i7/ i5/ i3, Pentium® & Celeron® processors, TDP under 35W
Chipset	Intel® H110 Chipset	Intel® H110 Chipset
Memory	2 x DDR4 SO-DIMM sockets, Max. Capacity 32 GB, Support Dual Channel DDR4 2400/2133 MHz	2 x DDR4 SO-DIMM sockets, Max. Capacity 32 GB, Support Dual Channel DDR4 2400/2133 MHz
Ethernet	2 x GbE LAN ports (Intel® I219V and Intel® I211AT)	6 x GbE LAN ports (1 x Intel® I219V and 5 x Intel® I211AT)
Graphic	Integrated Graphics Processor - Intel® HD Graphics: 1 x HDMI 1.4 1 x Display Port 1 x VGA 1 x LVDS 2 independent display outputs	Integrated Graphics Processor - Intel® HD Graphics: 1 x HDMI 1.4 1 x VGA 2 independent display outputs
Audio	Realtek® ALC269	Realtek® ALC269
Storage	2 x 2.5" HDD/SSD (SATA 6Gb/s)	2 x 2.5" HDD/SSD (SATA 6Gb/s)
Expansion Slots	1 x 2280 M.2 M-Key (SATA 6Gb/s) 1 x Full/Half-size Mini PCIe with SIM slot	1 x 2280/2242 M.2 M-Key (SATA 6Gb/s) 1 x Full-size mSATA
Front I/O	1 x Power Switch 1 x Power & HDD LED 2 x Remote control header 4 x USB 2.0 4 x COM ports (RS-232/422/485) 1 x COM port (RS-232) 1 x GPIO (8 bit) 2 x External Antenna Hole (Optional)	1 x Power Switch 1 x Power & HDD LED 2 x Remote control header 4 x USB 2.0 4 x COM ports (RS-232/422/485) 2 x COM ports (RS-232/422/485 & RI/5V/12V) 1 x GPIO (8 bit) 2 x External Antenna Hole (Optional)
Rear I/O	3 x Audio Jacks (Line in, Line out, Mic in) 1 x VGA 1 x HDMI 1 x Display Port 1 x LVDS 1 x COM port (RS-232/422/485 & RI/5V/12V) 2 x RJ45 LAN ports 2 x USB 3.0 2 x USB 2.0 1 x 3-pin Terminal Block 2 x External Antenna Hole (Optional)	3 x Audio Jacks (Line in, Line out, Mic in) 1 x VGA 1 x HDMI 6 x RJ45 LAN ports 4 x USB 3.0 1 x 3-pin Terminal Block 2 x External Antenna Hole (Optional)
Power	+12V/+19V/+24VDC	+12V/+19V/+24VDC
Operating Temp.	0°C to 50°C	0°C to 50°C
Ordering Information	9BQJH110AMR-SI (Box packing)	9BQJH110BMR-SI (Box packing)
Build in Components	CPU: Intel® Core™ i3-7100T Processor, 3M Cache, 3.40 GHz Memory: 4GB DDR4 SO-DIMM Storage: 128GB, 2280 M.2 SSD	CPU: Intel® Core™ i3-7100T Processor, 3M Cache, 3.40 GHz Memory: 4GB DDR4 SO-DIMM Storage: 128GB, 2280 M.2 SSD

QBiX-Plus Series



Model Name	QBiX-Plus-KBLA7100-A1	QBiX-Plus-APLA3450-A1
Dimension	180W x 117D x 36H (mm)	165W x 105D x 27H (mm)
CPU	Intel® Core™ i3-7100U Processor, 14nm, 2 cores, 4 threads, up to 2.40 GHz, TDP 15W	Intel® Celeron® Processor N3450, 14nm, 4 cores, 4 threads, up to 2.2 GHz, TDP 6W
Chipset	SOC	SOC
Memory	2 x DDR4 SO-DIMM sockets, Max. Capacity 32 GB, Support Dual Channel DDR4 2133 MHz	2 x DDR3L SO-DIMM sockets, Max. Capacity 8 GB, Support Dual Channel DDR3L 1866 MHz
Ethernet	2 x GbE LAN ports (Intel® I219LM and Intel® I210AT)	2 x GbE LAN ports (Realtek® RTL8111HS)
Graphic	Integrated Graphics Processor - Intel® HD Graphics 620: 2 x HDMI 2.0 2 independent display outputs	Integrated Graphics Processor - Intel® HD Graphics 500: 2 x HDMI 1.4 2 independent display outputs
Audio	Realtek® ALC255	Realtek® ALC255
Storage	—	—
Expansion Slots	1 x 2280 M.2 M-Key (PCIe x4, SATA 6Gb/s) 1 x 2230 M.2 E-Key 1 x Full-size Mini PCIe with SIM slot	1 x 2280 M.2 M-Key (SATA 6Gb/s) 1 x 2230 M.2 E-Key 1 x Full-size Mini PCIe with SIM slot
Front I/O	1 x USB3.1 Gen2 Type C 1 x USB3.1 Gen2 Type A 2 x USB3.0 1 x COM port (RS-232/422/485) 1 x Micro SD card slot 1 x Power button	2 x USB 3.0 1 x COM port (RS-232/422/485)(RJ45) 1 x Micro SD card slot 1 x Power button
Rear I/O	1 x Combo Audio Jack (Microphone & Headphone) 2 x RJ45 LAN ports 2 x USB 3.0 2 x HDMI 1 x DC Jack	1 x Combo Audio Jack (Microphone & Headphone) 2 x RJ45 LAN ports 2 x USB 3.0 2 x HDMI 1 x DC Jack
Side I/O	3 x External Antenna Hole (Optional)	3 x External Antenna Hole (Optional)
TPM	—	—
Power	+19VDC (Adapter 19V/90W)	+19VDC (Adapter 19V/65W)
Operating Temp.	0°C to 40°C	0°C to 50°C
Mounting	VESA 75/100	VESA 75/100
Ordering Information	9BCKABMR-SI (Box packing)	9BCBBAMR-SI (Box packing)
Built-in Components	Memory: 4GB DDR4 SO-DIMM Storage: 128GB M.2 SSD	Memory: 4GB DDR4 SO-DIMM Storage: 128GB M.2 SSD

Embedded IoT Series



Model Name	EL-30-4200 (rev. 1.0) EL-30-3350 (rev. 1.0)	EL-20-3710-32G (rev. 1.0) EL-20-3060-32G (rev. 1.0)
Dimension	140.8W x 107.5D x 29.5H (mm)	140.8W x 107.5D x 27H (mm)
CPU	Intel® Pentium® Processor N4200, 14nm, 4 cores, 4 threads, up to 2.5 GHz, TDP 6W (EL-30-4200) Intel® Celeron® Processor N3350, 14nm, 2 cores, 2 threads, up to 2.4 GHz, TDP 6W (EL-30-3350)	Intel® Pentium® processor N3710, 14nm, 4 cores, 4 threads, up to 2.56 GHz, TDP 6 W (EL-20-3710-32G) Intel® Celeron® processor N3060, 14nm, 2cores, 2 threads, up to 2.48 GHz, TDP 6 W (EL-20-3060-32G)
Chipset	FCBGA1296	FCBGA1296
Memory	2 x DDR3L SO-DIMM sockets, Max. Capacity 8 GB, Support Dual Channel DDR3L 1866 MHz	2 x DDR3L SO-DIMM sockets, Max. Capacity 8 GB, Support Dual Channel DDR3L 1600 MHz
Ethernet	2 x GbE LAN Port (Realtek® RTL8111HS)	2 x GbE LAN Port (Realtek® RTL8111HS)
Graphic	EL-30-4200: Integrated Graphics Processor - Intel® HD Graphics 505: 2 x HDMI 1.4 EL-30-3350: Integrated Graphics Processor - Intel® HD Graphics 500: 2 x HDMI 1.4 2 independent display outputs	Integrated Graphics Processor - Intel® HD Graphics 500: 2 x HDMI 1.4 2 independent display outputs
Audio	Realtek® ALC255	Realtek® ALC255
Storage	1 x eMMC 32GB	1 x eMMC 32GB
Expansion Slots	1 x Full-size Mini PCIe with SIM slot/ mSATA 1 x 2230 M.2 E-Key (Wi-Fi preinstalled) 1 x Zigbee module (Optional)	1 x Full-size Mini PCIe/mSATA 1 x Half-size Mini PCIe
Front I/O	4 x USB 3.0 1 x Micro SD Card Slot 1 x Audio Combo Jack (Headphone & Microphone) 1 x Power Button with LED 1 x HDD LED	4 x USB 3.0 1 x Micro SD Card Slot 1 x Audio Combo Jack (Headphone & Microphone) 1 x Power Button with LED 1 x HDD LED 3 x LED reserved for user configuration
Rear I/O	2 x RJ45 LAN ports 2 x HDMI 1 x COM port (RS-232/485)(RJ45 Type) 1 x DC Jack	2 x RJ45 LAN ports 2 x HDMI 1 x DC Jack
Side I/O	1 x COM port (RS-232)(Micro-B 5-pin) 1 x Kensington Lock 4 x External Antenna Hole	1 x USB 2.0 (Micro-B) 1 x COM port (RS-232)(Micro-B 5-pin) 1 x Kensington Lock 3 x External Antenna Hole
TPM	1 x TPM header	1 x TPM header
Power	+12V~19VDC (Adapter 19V/65W)	+12V~19VDC (Adapter 19V/65W)
Operating Temp.	0°C to 40°C	0°C to 40°C
Ordering Information	9BTCV9WMR-SI (Box packing) (EL-30-4200) 9BTCV8WMR-SI (Box packing) (EL-30-3350)	9BTCV5MR-SI (Box packing)(EL-20-3710-32G) 9BTCV7MR-SI (Box packing)(EL-20-3060-32G)
Built-in Components	Memory: 2 x 2GB DDR3L SO-DIMM ZigBee Module MS5168-M03 WiFi/BT Combo module: Intel® AC3168	Memory: 2 x 2GB DDR3L SO-DIMM (EL-20-3710-32G) Memory: 2 x 1GB DDR3L SO-DIMM (EL-20-3060-32G)

SDM-L Series



SDM-L Series/ EXTERNAL GPU KITS

Model Name	SDM-7300L/ SDM-7100L	SDM-4000L	SDM-3350L-QV
Dimensions	SDM-Large, 175W x 100D (mm)	SDM-Large, 175W x 100D (mm)	SDM-Large, 175W x 100D (mm)
CPU	Intel® Core™ i5-7300U Processor, 14nm, 2 cores, 4 threads, up to 3.5 GHz, TDP 15W, VPro support (SDM-7300L) Intel® Core™ i3-7100U Processor, 14nm, 2 cores, 4 threads, up to 2.40 GHz, TDP 15W (SDM-7100L)	Intel® Celeron® Processor N4000, 14nm, 2 Cores, 2 threads, up to 2.6 GHz, TDP 6W	Intel® Celeron® Processor N3350, 14nm, 2 cores, 2 threads, up to 2.4 GHz, TDP 6W
VPro	Intel® vPro™ Platform Eligibility (SDM-7300L)	—	—
Memory	2 x DDR4 SO-DIMM sockets, Max. Capacity 32 GB, Support Dual Channel DDR4 2133 MHz	2 x DDR4 SO-DIMM sockets, Max. Capacity 8 GB, Support Dual Channel DDR4 2400 MHz	2 x DDR3L SO-DIMM sockets, Max. Capacity 8 GB, Support Dual Channel DDR3L 1866 MHz
Ethernet	1 x GbE LAN port (7300L: Intel® I219LM) (7100L: Intel® I219V)	1 x GbE LAN port (Realtek® RTL8111HS)	1 x GbE LAN port (Realtek® RTL8111HS)
Graphic	Integrated Graphics Processor - Intel® HD Graphics 620: 1 x HDMI 2.0 (SDM), 1 x Display Port (Rear/SDM) 2 independent display outputs	Integrated Graphics Processor - Intel® UHD Graphics 600: 1 x HDMI 2.0 (SDM), 1 x Display Port (Rear/SDM) 2 independent display outputs	Integrated Graphics Processor - Intel® HD Graphics 500: 1 x HDMI 1.4 (SDM), 2 x Display Port (Rear/SDM) 3 independent display outputs (Full HD)
Audio	Intel® Integrated Audio	Intel® Integrated Audio	Intel® Integrated Audio
Storage	—	1 x eMMC 32GB	1 x eMMC 32GB
Expansion Slots	1 x 2280 M.2 M-Key (PCIe x4, SATA 6Gb/s) 1 x 2230 M.2 E-Key	1 x 2280 M.2 M-Key (SATA 6Gb/s) 1 x 2230 M.2 E-Key	1 x 2280 M.2 M-Key (SATA 6Gb/s) 1 x 2230 M.2 E-Key
Rear I/O	1 x Display Port 1 x RJ45 LAN port 4 x USB 3.0 1 x Power/ HDD LED 2 x External Antenna Holes (Optional) 1 x Reset button 1 x Power button	1 x Display Port 1 x RJ45 LAN port 4 x USB 3.0 1 x Power/ HDD LED 2 x External Antenna Holes (Optional) 1 x Reset button 1 x Power button	1 x Display Port 1 x RJ45 LAN port 4 x USB 3.0 1 x Power/ HDD LED 2 x External Antenna Holes (Optional) 1 x Reset button 1 x Power button
TPM	1 x TPM header	—	—
Operating Temp.	0°C to 55°C	0°C to 55°C	0°C to 55°C
Ordering Information	9MFLP3ALMR-SI (Box packing) (SDM-7300L) 9MFLP3ALNR-SI (Bulk packing) (SDM-7100L) 9MFLP3ALMR-SI (Box packing) (SDM-7100L)	9MZGLKALNR-SI (Bulk packing) 9MZGLKALMR-SI (Box packing)	9MAPLKALMR-SI (Box packing)

SDM-L Series

EXTERNAL GPU KITS



Model Name	SDM-3350L-HW	Model Name	External Discrete GPU BOX Kit
Dimensions	SDM-Large, 175W x 100D (mm)	Dimension	172W x 370D x 102.5H (mm)
CPU	Intel® Celeron® Processor N3350, 14nm, 2 cores, 2 threads , up to 2.4 GHz, TDP 6W	GFX Support	Full Length 30mm Max 260W Graphic Card
VPro	—	I/O	4 x Ext. Mini SAS HD Port (PCIe x16)
Memory	2 x DDR3L SO-DIMM sockets, Max. Capacity 8 GB, Support Dual Channel DDR3L 1866 MHz	PCIe support	PCIe x16
Ethernet	1 x GbE LAN port (Realtek® RTL8111HS)	Power	Flex ATX PSU 400W/500W (Optional)
Graphic	Integrated Graphics Processor - Intel® HD Graphics 500: 1 x HDMI 1.4 (SDM), 1 x Display Port (FHD)(SDM) 2 independent display outputs	Operating Temp.	0°C to 35°C
Audio	Intel® Integrated Audio		
Storage	1 x eMMC 32GB		
Expansion Slots	1 x 2280 M.2 M-Key (SATA 6Gb/s) 1 x 2230 M.2 E-Key		
Rear I/O	1 x RJ45 LAN port 4 x USB 3.0 1 x Power/ HDD LED 2 x External Antenna Holes (Optional) 1 x Reset button 1 x Power button		
TPM	—		
Operating Temp.	0°C to 55°C		
Ordering Information	9MAPLKBLMR-HW (Box packing)		

Micro-ATX Series



Micro-ATX Series

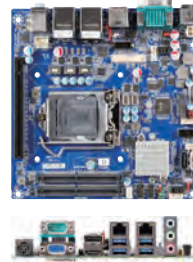
Model Name	uATX-H370A	uATX-H310A	uATX-H110A
CPU	Support for 8th/9th Generation Intel® Core™ i7/i5/i3, Pentium® & Celeron® processors, TDP under 65W	Support for 8th/9th Generation Intel® Core™ i7/i5/i3, Pentium® & Celeron® processors, TDP under 65W	Supports for 6/7th Generation Intel® Core™ i7/i5/i3, Pentium® & Celeron® processors, TDP under 65W
Socket	LGA 1151	LGA 1151	LGA 1151
Chipset	Intel® H370 Chipset	Intel® H310 Chipset	Intel® H110 Chipset
Memory	4 x DDR4 DIMM sockets, Max. Capacity 64 GB, Support Dual Channel DDR4 2666/2400 MHz	2 x DDR4 DIMM sockets, Max. Capacity 32 GB, Support Dual Channel DDR4 2666/2400 MHz	2 x DDR4 DIMM sockets, Max. Capacity 32 GB, Support Dual Channel DDR4 2400/2133 MHz
Ethernet	2 x GbE LAN port (Intel® I219V and Realtek® RTL8111HS)	2 x GbE LAN port (Intel® I219V and Realtek® RTL8111HS)	2 x GbE LAN port (Intel® I219LM and Realtek® RTL8111HS)
Graphic	Integrated Graphics Processor - Intel® HD Graphics: 1 x HDMI 1.4 1 x DVI-D 1 x VGA 3 independent display outputs	Integrated Graphics Processor - Intel® HD Graphics: 1 x HDMI 1.4 1 x DVI-D 1 x VGA 2 independent display outputs	Integrated Graphics Processor - Intel® HD Graphics: 1 x HDMI 1.4 1 x DVI-D 1 x VGA 2 independent display outputs
Audio	Realtek® ALC888S	Realtek® ALC888S	Realtek® ALC888S
Storage	6 x SATA 6Gb/s ports (RAID 0/1/5/10)	4 x SATA 6Gb/s ports	4 x SATA 6Gb/s ports
Expansion Slots	1 x PCIe x16 (Gen3 x16) 1 x PCIe x4 (Gen3 x4) 2 x PCIe x1 (Gen3 x1) 1 x 2280/2260 M.2 M-Key (PCIe x4)	1 x PCIe x16 (Gen3 x16) 1 x PCIe x4 (Gen2 x2) 2 x PCIe x1 (Gen2 x1)	1 x PCIe x16 (Gen3 x16) 1 x PCIe x4 (Gen2 x2) 2 x PCIe x1 (Gen2 x1)
Internal I/O	1 x 24-pin ATX main power connector 1 x 8-pin ATX 12V power connector 1 x CPU fan header 2 x System fan headers 1 x Front panel header 1 x Front panel audio header 4 x USB 2.0 headers 2 x USB 3.0 headers 3 x COM headers (RS-232) 1 x Clear CMOS jumper 1 x Buzzer	1 x 24-pin ATX main power connector 1 x 8-pin ATX 12V power connector 1 x CPU fan header 2 x System fan headers 1 x Front panel header 1 x Front panel audio header 4 x USB 2.0 headers 3 x COM headers (RS-232) 1 x Clear CMOS jumper 1 x Buzzer	1 x 24-pin ATX main power connector 1 x 8-pin ATX 12V power connector 1 x CPU fan header 2 x System fan headers 1 x Front panel header 1 x Front panel audio header 2 x USB 2.0 headers 3 x COM headers (RS-232) 1 x Clear CMOS jumper 1 x Buzzer
Rear I/O	3 x Audio Jacks (Line in, Line out, Mic in) 1 x COM port (RS-232) 1 x HDMI 1 x DVI-D 1 x VGA 2 x RJ45 LAN ports 3 x USB 3.0 1 x USB 3.1 Gen2	3 x Audio Jacks (Line in, Line out, Mic in) 1 x COM port (RS-232) 1 x HDMI 1 x DVI-D 1 x VGA 2 x RJ45 LAN ports 4 x USB 3.0	3 x Audio Jacks (Line in, Line out, Mic in) 1 x COM port (RS-232) 1 x HDMI 1 x DVI-D 1 x VGA 2 x RJ45 LAN ports 4 x USB 3.0
TPM	Onboard TPM 2.0 security chip INFINEON SLB9665VQ2.0	Onboard TPM 2.0 security chip INFINEON SLB9665VQ2.0	1 x TPM header
Operating Temp.	0°C to 60°C	0°C to 60°C	0°C to 60°C
Ordering Information	9MCH37AMNR-SI (Bulk packing)	9MCH31AMNR-SI (Bulk packing)	9MDH11BMNR-SI (Bulk packing)

Micro-ATX Series



Model Name	uATX-H81A	uATX-RYZEN
CPU	Supports for 4th Generation Intel® Core™ i7/i5/i3, Pentium® & Celeron® processors, TDP under 85W	Supports AMD 3rd Gen/ 2nd Gen/ 1st Gen Ryzen™ CPU/APU AM4 μPGA (Matisse/ Picasso/ Raven2/ Pinnacle/ Raven/ Summit Ridge), TDP under 95W
Socket	LGA 1150	Socket AM4
Chipset	Intel® H81 Chipset	AMD® B450
Memory	2 x DDR3 SO-DIMM slots, Max. Capacity 16 GB, Support Dual Channel DDR3 1600/1333 MHz	4 x DDR4 DIMM sockets, Max. Capacity 64 GB, Support Dual Channel DDR4 2666/2400/2133 MHz
Ethernet	2 x GbE LAN ports (Realtek® RTL8111G)	2 x GbE LAN ports (Realtek® RTL8111HS)
Graphic	Integrated Graphics Processor - Intel® HD Graphics: 1 x DVI-D 1 x VGA 1 x LVDS 2 independent display outputs	Integrated Graphics Processor - Radeon™ Vega 11/ 8/ 3/ Graphics 1 x HDMI 1.4 1 x Display Port 1 x VGA 3 independent display outputs
Audio	Realtek® ALC269	Realtek® ALC269
Storage	2 x SATA 3Gb/s ports	4 x SATA 6Gb/s ports (RAID 0/1/10)
Expansion Slots	1 x PCIe x16 (Gen3 x16) 1 x PCIe x1 (Gen2 x1) 2 x PCI 1 x Half-size Mini PCIe 1 x Full-size Mini PCIe	1 x PCIe x16 (Gen3 x16) 1 x PCIe x4 (Gen2 x2) 2 x PCIe x1 (Gen2 x1) 1 x 2280/2260/2240 M.2 M-Key (PCIe x4, SATA 6Gb/s)
Internal I/O	1 x 24-pin ATX main power connector 1 x 4-pin ATX 12V power connector 1 x CPU fan header 2 x System fan headers 1 x Front panel header 1 x Front audio header 1 x 2W Speaker out header 6 x USB 2.0 headers 6 x COM headers (RS-232) 2 x COM headers (RS-232 & RI/5V/12V) 1 x LPC 1 x LPT 1 x GPIO (8 bits) & SMBUS header 1 x Clear CMOS jumper 1 x Buzzer	1 x 24-pin ATX main power connector 1 x 4-pin ATX 12V power connector 1 x CPU fan header 2 x System fan headers 1 x Front panel header 1 x Front audio header 1 x 2W Speaker out header 4 x USB 2.0 headers 2 x USB 3.0 headers 5 x COM headers (RS-232) 1 x PS/2 Keyboard/ Mouse Connector 1 x GPIO (8 bits) & SMBUS header 1 x Clear CMOS jumper 1 x Buzzer
Rear I/O	3 x Audio Jacks (Line in, Line out, Mic in) 2 x COM ports (RS-232/422/485) 1 x VGA 1 x DVI-D 2 x RJ45 LAN ports 4 x USB 3.0 1 x PS2 KB/MS	3 x Audio Jacks (Line in, Line out, Mic in) 1 x COM port (RS-232/422/485 & RI/5V/12V) 1 x HDMI 1 x Display Port 1 x VGA 2 x RJ45 LAN ports 4 x USB 3.0 1 x USB 3.1 Gen2 1 x USB 3.1 Gen2 Type C
TPM	Onboard TPM 1.2 security chip Infineon SLB9635TT1.2	1 x TPM header
Operating Temp.	0°C to 60°C	0°C to 60°C
Ordering Information	9MATMH81NR-SI (Bulk packing) 9MATMH81MR-SI (Box packing)	9MZRYZBMNR-SI (Bulk packing)

Mini-ITX Series



Mini-ITX Series

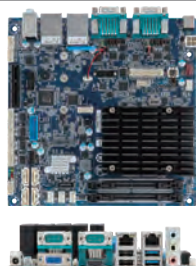
Model Name	mITX-Q370A	mITX-H310A	mITX-Q170A
CPU	Support for 8th/9th Generation Intel® Core™ i7/i5/i3, Pentium® & Celeron® processors, TDP under 65W	Support for 8th/9th Generation Intel® Core™ i7/i5/i3, Pentium® & Celeron® processors, TDP under 65W	Supports for 6/7th Generation Intel® Core™ i7/i5/i3, Pentium® & Celeron® processors, TDP under 65W
Socket	LGA 1151	LGA 1151	LGA 1151
Chipset	Intel® Q370 Chipset	Intel® H310 Chipset	Intel® Q170 Chipset
Memory	2 x DDR4 SO-DIMM sockets, Max. Capacity 32 GB, Support Dual Channel DDR4 2666/2400 MHz	2 x DDR4 SO-DIMM sockets, Max. Capacity 32 GB, Support Dual Channel DDR4 2666/2400 MHz	2 x DDR4 SO-DIMM sockets, Max. Capacity 32 GB, Support Dual Channel DDR4 2400/2133 MHz
Ethernet	2 x GbE LAN ports (Intel® I219LM and Intel® I211AT)	2 x GbE LAN ports (Intel® I219V and Intel® I211AT)	2 x GbE LAN ports (Intel® I219LM and Intel® I211AT)
Graphic	Integrated Graphics Processor - Intel® HD Graphics: 1 x HDMI 1.4 1 x Display Port 1 x VGA 1 x eDP 3 independent display outputs	Integrated Graphics Processor - Intel® HD Graphics: 1 x HDMI 1.4 1 x Display Port 1 x VGA 1 x LVDS or eDP 2 independent display outputs	Integrated Graphics Processor - Intel® HD Graphics: 1 x HDMI 1.4 1 x Display Port 1 x LVDS or eDP 3 independent display outputs
Audio	Realtek® ALC269	Realtek® ALC269	Realtek® ALC269
Storage	3 x SATA 6Gb/s ports (RAID 0/1/5/10)	2 x SATA 6Gb/s ports	3(2) x SATA 6Gb/s ports (RAID 0/1/5/10) (incl. 1 x SATA supports SATA DOM)
Expansion Slots	1 x PCIe x16 (Gen3 x16) 1 x 2280/2242 M.2 M-Key (PCIe x4, SATA 6Gb/s, Optane memory) 1 x 2230 M.2 E-Key	1 x PCIe x16 (Gen3 x16) 1 x 2280/2242 M.2 M-Key (SATA 6Gb/s) 1 x 2230 M.2 E-Key	1 x PCIe x16 (Gen3 x16) 1 x 2280/2242 M.2 M-Key (PCIe x4, SATA 6Gb/s) 1 x Full-size Mini PCIe/mSATA
Internal I/O	1 x 4-pin ATX main power connector 2 x SATA power connectors 1 x CPU fan header 1 x System fan header 1 x Front panel header 1 x Front panel audio header 1 x 2W Speaker out header 4 x USB 2.0 headers 2 x USB 3.0 headers 1 x COM header (RS-232) 1 x GPIO (8 bits) & SMBUS header 1 x Backlight Control header 1 x Clear CMOS jumper 1 x Buzzer	1 x 4-pin ATX main power connector 1 x SATA power connector 1 x CPU fan header 1 x System fan header 1 x Front panel header 1 x Front panel audio header 1 x 2W Speaker out header 4 x USB 2.0 headers 2 x COM headers (RS-232) 1 x COM header (RS-232/422/485 & RI/5V/12V) 1 x GPIO (8 bits) & SMBUS header 1 x Backlight Control header 1 x Clear CMOS jumper 1 x Buzzer	1 x 4-pin ATX main power connector 2 x SATA power connectors 1 x CPU fan header 1 x System fan header 1 x Front panel header 1 x Front panel audio header 1 x 2W Speaker out header 4 x USB 2.0 headers 2 x USB 3.0 headers 1 x COM header (RS-232/422/485 & RI/5V/12V) 1 x GPIO (8 bits) & SMBUS header 1 x Backlight Control header 1 x Clear CMOS jumper 1 x Buzzer
Rear I/O	3 x Audio Jacks (Line in, Line out, Mic in) 1 x COM port (RS-232/422/485 & RI/5V/12V) 1 x HDMI 1 x Display Port 1 x VGA 2 x RJ45 LAN ports 3 x USB 3.0 1 x USB 3.1 Gen2 1 x DC Jack (+12V/+19V/+24VDC)	3 x Audio Jacks (Line in, Line out, Mic in) 1 x COM port (RS-232/422/485 & RI/5V/12V) 1 x HDMI 1 x Display Port 1 x VGA 2 x RJ45 LAN ports 4 x USB 3.0 1 x DC Jack (+12V/+19V/+24VDC)	x Audio Jacks (Line in, Line out, Mic in) 1 x COM port (RS-232/422/485 & RI/5V/12V) 1 x HDMI 1 x Display Port 1 x VGA 2 x RJ45 LAN ports 4 x USB 3.0 1 x DC Jack (+12V/+19V/+24VDC)
TPM	1 x TPM header	1 x TPM header	1 x TPM header
Operating Temp.	0°C to 60°C	0°C to 60°C	0°C to 60°C
Ordering Information	9MCQ37A1NR-SI (Bulk packing)	9MH310A1NR-SI (Bulk packing) 9MH310A1MR-SI (Box packing)	9MDQ17B1MR-SI (Box packing)

Mini-ITX Series



Model Name	mITX-H110A	mITX-H110B
CPU	Supports for 6/7th Generation Intel® Core™ i7/i5/i3, Pentium® & Celeron® processors, TDP under 65W	Supports for 6/7th Generation Intel® Core™ i7/i5/i3, Pentium® & Celeron® processors, TDP under 65W
Socket	LGA 1151	LGA 1151
Chipset	Intel® H110 Chipset	Intel® H110 Chipset
Memory	2 x DDR4 SO-DIMM sockets, Max. Capacity 32 GB, Support Dual Channel DDR4 2400/2133 MHz	2 x DDR4 SO-DIMM sockets, Max. Capacity 32 GB, Support Dual Channel DDR4 2400/2133 MHz
Ethernet	2 x GbE LAN ports (Intel® I219V and Intel® I211AT)	6 x GbE LAN ports (1 x Intel® I219V and 5 x Intel® I211AT)
Graphic	Integrated Graphics Processor - Intel® HD Graphics: 1 x HDMI 1.4 1 x Display Port 1 x VGA 1 x LVDS or eDP 2 independent display outputs	Integrated Graphics Processor - Intel® HD Graphics: 1 x HDMI 1.4 1 x VGA 2 independent display outputs
Audio	Realtek® ALC269	Realtek® ALC269
Storage	3 x SATA 6Gb/s ports (incl. 1 x SATA supports SATA DOM)	2 x SATA 6Gb/s ports
Expansion Slots	1 x PCIe x16 (Gen3 x16) 1 x 2280/2242 M.2 M-Key (SATA 6Gb/s) 1 x Full-size Mini PCIe	1 x PCIe x16 (Gen3 x16) 1 x 2280/2242 M.2 M-Key (SATA 6Gb/s) 1 x Full-size mSATA
Internal I/O	1 x 4-pin ATX main power connector 2 x SATA power connectors 1 x CPU fan header 1 x System fan header 1 x Front panel header 1 x Front panel audio header 1 x 2W Speaker out header 3 x USB 2.0 headers 2 x USB 3.0 headers 1 x COM header (RS-232/422/485 & RI/5V/12V) 1 x GPIO (8 bits) & SMBUS header 1 x Backlight Control header 1 x Clear CMOS jumper 1 x Buzzer	1 x 4-pin ATX main power connector 2 x SATA power connectors 1 x CPU fan header 1 x System fan header 1 x Front panel header 1 x Front panel audio header 1 x 2W Speaker out header 6 x USB 2.0 headers 2 x COM headers (RS-232/422/485 & RI/5V/12V) 1 x GPIO (8 bits) & SMBUS header 1 x Clear CMOS jumper 1 x Buzzer
Rear I/O	3 x Audio Jacks (Line in, Line out, Mic in) 1 x COM port (RS-232/422/485 & RI/5V/12V) 1 x HDMI 1 x Display Port 1 x VGA 2 x RJ45 LAN ports 2 x USB 2.0 2 x USB 3.0 1 x DC Jack (+12/+19/+24VDC)	3 x Audio Jacks (Line in, Line out, Mic in) 1 x HDMI 1 x VGA 6 x RJ45 LAN ports 4 x USB 3.0 1 x DC Jack (+12V/+19V/+24VDC)
TPM	1 x TPM header	1 x TPM header
Operating Temp.	0°C to 60°C	0°C to 60°C
Ordering Information	9MDH11LINR-SI (Bulk packing) 9MDH11LIMR-SI (Box packing)	9MH110A1NR-SI (Bulk packing) 9MH110A1MR-SI (Box packing)

Mini-ITX Series



Mini-ITX Series

Model Name	mITX-4105A	mITX-4205A
CPU	Intel® Celeron® J4105 Processor, 14nm, 4 cores, 4 threads, up to 2.5 GHz, TDP 10W, fan-less design	Intel® Pentium® Processor J4205, 14nm, 4 cores, 4 threads, up to 2.6 GHz, TDP 10W, fan-less design
Socket	FCBGA1090	FCBGA1296
Chipset	—	—
Memory	2 x DDR4 SO-DIMM sockets, Max. Capacity 8 GB, Support Dual Channel DDR4 2400 MHz	2 x DDR3L SO-DIMM sockets, Max. Capacity 8 GB, Support Dual Channel DDR3L 1866 MHz
Ethernet	2 x GbE LAN ports (Realtek® RTL8111HS)	2 x GbE LAN ports (Realtek® RTL8111HS)
Graphic	Integrated Graphics Processor - Intel® UHD Graphics 600: 1 x HDMI 2.0 1 x VGA 1 x LVDS or eDP 3 independent display outputs	Integrated Graphics Processor - Intel® HD Graphics 505: 1 x HDMI 1.4 1 x VGA 1 x LVDS or eDP 3 independent display outputs
Audio	Realtek® ALC269	Realtek ALC269
Storage	5 x SATA 6Gb/s ports (4 x from Marvell 88SE9230, support RAID 0/1/10) (1 x from J4105 supports SATA DOM)	5 x SATA 6Gb/s ports (4 x from Marvell 88SE9230, support RAID 0/1/10) (1 x from J4205 supports SATA DOM)
Expansion Slots	1 x PCIe x4 (Gen2 x2) 1 x 2280/2260/2242 M.2 M-Key (SATA 6Gb/s) 1 x 2230 M.2 E-Key (CNVi cards only)	1 x PCIe x1 (Gen2 x1) 1 x Full-size mSATA
Internal I/O	1 x 4-pin ATX main power connector 3 x SATA power connectors 1 x CPU fan header 1 x System fan header 1 x Front panel header 1 x Front panel audio header 1 x 2W Speaker out header 2 x USB 2.0 headers 2 x USB 3.0 headers 4 x COM headers (RS-232) 1 x GPIO (8 bits) & SMBUS header 1 x Case open header 1 x AT/ATX mode jumper 1 x Backlight Control header 1 x RAID LED header 2 x LAN LED headers 1 x Clear CMOS jumper 1 x Buzzer	1 x 4-pin ATX power connector 5 x SATA power connectors 1 x CPU fan header 1 x System fan header 1 x Front panel header 1 x Front panel audio header 1 x 2W Speaker out header 2 x USB 2.0 headers 2 x USB 3.0 headers 4 x COM headers (RS-232) 1 x GPIO (8 bits) & SMBUS header 1 x Case open header 1 x PS/2 KB/MS Connector 1 x Backlight Control header 1 x RAID LED header 2 x LAN LED headers 1 x Clear CMOS jumper 1 x Buzzer
Rear I/O	3 x Audio Jacks (Line in, Line out, Mic in) 2 x COM ports (RS-232/422/485 & RI/5V/12V) 1 x HDMI 2.0 1 x VGA 2 x RJ45 LAN ports 2 x USB 2.0 2 x USB 3.0 1 x DC Jack (+12VDC)	3 x Audio Jacks (Line in, Line out, Mic in) 2 x COM ports (RS-232/422/485 & RI/5V/12V) 1 x HDMI 1 x VGA 2 x RJ45 LAN ports 2 x USB 2.0 2 x USB 3.0 1 x DC Jack (+12VDC)
TPM	1 x TPM header	1 x TPM header
Operating Temp.	0°C to 60°C	0°C to 60°C
Ordering Information	9MZGLKAINR-SI (Bulk packing)	Fanless version: 9MZAPLAINR-SI (Bulk packing)

Mini-ITX Series



Model Name	mITX-1900A	mITX-1605A
CPU	Intel® Celeron® Processor J1900, 22nm, 4 cores, 4 threads, up to 2.42 GHz, TDP 10W	AMD® RYZEN™ Embedded V1605B, 14nm, 4 cores, 8 threads, 2.0 GHz, up to 3.6 GHz, TDP 25W
Socket	FCBGA1170	FP5 BGA
Chipset	—	—
Memory	2 x DDR3L SO-DIMM sockets, Max. Capacity 8 GB, Support Dual Channel DDR3L 1333MHz	2 x DDR4 SO-DIMM sockets, Max. Capacity 32 GB, Support Dual Channel DDR4 2400 MHz
Ethernet	2 x GbE LAN ports (Realtek® RTL8111G)	2 x GbE LAN ports (Realtek® RTL8111HS)
Graphic	Integrated Graphics Processor - Intel® HD Graphics: 1 x HDMI 1.4 1 x VGA 1 x LVDS 2 independent display outputs	Integrated Graphics Processor - AMD Radeon™ Vega 8 Graphics: 4 x Display Port 1 x LVDS (Share from DP) 4 independent display outputs
Audio	Realtek® ALC269	Realtek® ALC269
Storage	1 x SATA 3Gb/s port (incl. 1 x SATA supports SATA DOM)	1 x SATA 6Gb/s port
Expansion Slots	1 x PCI 1 x Full-size Mini PCIe 1 x Full-size mSATA	1 x PCIe x16 (Gen3 x8) 1 x 2280 M.2 M-Key (SATA 6Gb/s) 1 x 2230 M.2 E-Key 1 x Full-size Mini PCIe with SIM slot
Internal I/O	1 x 4-pin ATX power connector 1 x SATA power header 1 x CPU fan header 1 x System fan header 1 x Front panel header 1 x Front audio header 1 x 2W Speaker out header 2 x USB 2.0 headers 1 x COM header (RS-232/422/485) 3 x COM headers (RS-232) 1 x COM header (RS-232 & RI/5V/12V) 1 x GPIO (8 bits) & SMBUS header 1 x PS/2 KB/MS Connector 1 x AT/ATX mode jumper 1 x Backlight control header 1 x Clear CMOS jumper 1 x Buzzer	1 x 4-pin ATX power connector 1 x SATA power connector 1 x CPU fan header 1 x System fan header 1 x Front panel header 1 x Front panel audio header 1 x 2W Speaker out header 6 x USB 2.0 headers 2 x COM headers (RS-232) 1 x GPIO (8 bits) & SMBUS header 1 x Backlight Control header 1 x LVDS/ DP Jumper 1 x AT/ATX mode jumper 1 x Clear CMOS jumper
Rear I/O	3 x Audio Jacks (Line in, Line out, Mic in) 1 x COM port (RS-232) 1 x HDMI 1 x VGA 2 x RJ45 LAN ports 4 x USB 2.0 1 x USB 3.0 1 x DC Jack (+12VDC)	3 x Audio Jacks (Line in, Line out, Mic in) 2 x COM ports (RS-232/422/485 & RI/5V/12V) 4 x Display Port 2 x RJ45 LAN ports 4 x USB 3.0 1 x DC Jack (+12V~24VDC)
TPM	1 x TPM header	1 x TPM header
Operating Temp.	0°C to 60°C	0°C to 60°C
Ordering Information	Fan version: 9MVBAYAINR-SI (Bulk packing) Fanless version: 9MVBAYAINR-00 (Bulk packing)	Fan version: 9MRZNVIMIR-SI (Box packing)

Thin Mini-ITX Series



Thin Mini-ITX Series

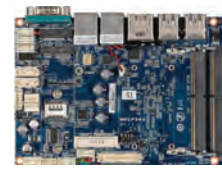
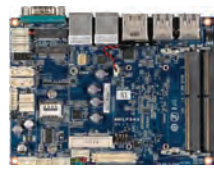
Model Name	iTXL-Q370A	iTXL-Q170A	iTXL-H110C
CPU	Support for 8th/9th Generation Intel® Core™ i7/i5/i3, Pentium® & Celeron® processors, TDP under 65W	Supports for 6/7th Generation Intel® Core™ i7/i5/i3, Pentium® & Celeron® processors, TDP under 65W	Supports for 6/7th Generation Intel® Core™ i7/i5/i3, Pentium® & Celeron® processors, TDP under 65W
Socket	LGA 1151	LGA 1151	LGA 1151
Chipset	Intel® Q370 Chipset	Intel® Q170 Chipset	Intel® H110 Chipset
Memory	2 x DDR4 SO-DIMM sockets, Max. Capacity 32 GB, Support Dual Channel DDR4 2666/2400 MHz	2 x DDR4 SO-DIMM sockets, Max. Capacity 32 GB, Support Dual Channel DDR4 2400/2133 MHz	2 x DDR4 SO-DIMM sockets, Max. Capacity 32 GB, Support Dual Channel DDR4 2400/2133 MHz
Ethernet	1 x GbE LAN port (Intel® I219LM)	1 x GbE LAN port (Intel® I219LM)	1 x GbE LAN port (Realtek® RTL8111HS)
Graphic	Integrated Graphics Processor - Intel® HD Graphics: 1 x HDMI 2.0 1 x Display Port 1 x LVDS 3 independent display outputs	Integrated Graphics Processor - Intel® HD Graphics: 1 x HDMI 1.4 1 x Display Port 1 x LVDS 3 independent display outputs	Integrated Graphics Processor - Intel® HD Graphics: 1 x HDMI 1.4 1 x Display Port 1 x LVDS 2 independent display outputs
Audio	Realtek® ALC887 + ALC105 Amplifier	Realtek® ALC887 + ALC105 Amplifier	Realtek® ALC887 + ALC105 Amplifier
Storage	4 x SATA 6Gb/s ports (RAID 0/1/5/10)	4 x SATA 6Gb/s ports (RAID 0/1/5/10)	2 x SATA 6Gb/s ports
Expansion Slots	1 x PCIe x4 (Gen3 x4) 1 x 2280/2260 M.2 M-Key (PCIe x4, SATA6Gb/s, Optane memory) 1 x 2230 M.2 E-Key	1 x PCIe x4 (Gen3 x4) 1 x 2280/2260 M.2 M-Key (PCIe x4, SATA6Gb/s) 1 x 2230 M.2 E-Key	1 x 2280/2260 M.2 M-Key (PCIe x2, SATA 6Gb/s) 1 x 2230 M.2 E-Key
Internal I/O	1 x 2-pin ATX main power connector 1 x SATA Power connector 1 x CPU fan header 1 x System fan header 1 x Front panel header 1 x Front panel audio header 1 x 3W Speaker out header 1 x DMIC header 5 x USB 2.0 headers 2 x USB 3.0 headers 1 x COM header (RS-232) 1 x FPD (For LVDS 19V) 1 x FPD_SW 1x3 (For Panel Power SW) 1 x LCD_VCC Pin header 1 x Backlight Control header	1 x 2-pin ATX main power connector 1 x SATA Power connector 1 x CPU fan header 1 x System fan header 1 x Front panel header 1 x Front panel audio header 1 x 3W Speaker out header 1 x DMIC header 5 x USB 2.0 headers 2 x USB 3.0 headers 1 x COM header (RS-232) 1 x FPD (For LVDS 19V) 1 x FPD_SW 1x3 (For Panel Power SW) 1 x LCD_VCC Pin header 1 x Backlight Control header 1 x NFC connector	1 x 2-pin ATX main power connector 1 x SATA Power connector 1 x CPU fan header 1 x System fan header 1 x Front panel header 1 x Front panel audio header 1 x 3W Speaker out header 1 x DMIC header 5 x USB 2.0 headers 1 x COM header (RS-232) 1 x FPD (For LVDS 19V) 1 x FPD_SW 1x3 (For Panel Power SW) 1 x LCD_VCC Pin header 1 x Backlight Control header
Rear I/O	2 x Audio Jacks (Line out, Mic in) 1 x HDMI 1 x Display Port 1 x RJ45 LAN port 3 x USB 3.0 1 x USB 3.0 Type C 1 x DC Jack (+12V/+19VDC)	2 x Audio Jacks (Line out, Mic in) 1 x HDMI 1 x Display Port 1 x RJ45 LAN port 4 x USB 3.0 1 x DC Jack (+12V/+19VDC)	2 x Audio Jacks (Line out, Mic in) 1 x HDMI 1 x Display Port 1 x RJ45 LAN port 4 x USB 3.0 1 x DC Jack (+12V/+19VDC)
TPM	1 x TPM header	Onboard TPM 2.0 security chip INFINEON SLB9665VQ2.0	1 x TPM header
Operating Temp.	0°C to 60°C	0°C to 60°C	0°C to 60°C
Ordering Information	9MQ37ATMR-SI (Box packing)	9MDQ17AINR-SI (Bulk packing)	9MDH11KINR-SI (Bulk packing)

Thin Mini-ITX Series



Model Name	iTXL-6100B	iTXL-3955A	iTXL-3350A	iTXL-1900A
CPU	Intel® Core™ i3-6100U Processor, 14nm, 2 cores, 4 threads, 2.3 GHz, TDP 15W	Intel® Celeron® Processor 3955U, 14nm, 2 cores, 4 threads, 2.0 GHz, TDP 15W	Intel® Celeron® Processor N3350, 14nm, 2 cores, 2 threads, up to 2.4 GHz, TDP 6W	Intel® Celeron® Processor J1900, 22nm, 4 cores, 4 threads, up to 2.42 GHz, TDP 10W
Socket	FCBGA1356	FCBGA1356	FCBGA1296	FCBGA1170
Chipset	—	—	—	—
Memory	2 x DDR4 SO-DIMM sockets, Max. Capacity 32 GB, Support Dual Channel DDR4 2133 MHz	2 x DDR4 SO-DIMM sockets, Max. Capacity 32 GB, Support Dual Channel DDR4 2133 MHz	2 x DDR3L SO-DIMM sockets, Max. Capacity 8 GB, Support Dual Channel DDR3L 1866 MHz	2 x DDR3L SO-DIMM sockets, Max. Capacity 8 GB, Support Dual Channel DDR3L 1333 MHz
Ethernet	2 x GbE LAN ports (Intel® I219V and Intel® I211AT)	2 x GbE LAN ports (Intel® I219V and Intel® I211AT)	2 x GbE LAN ports (Realtek® RTL8111HS)	1 x GbE LAN ports (Realtek® RTL8111G)
Graphic	Integrated Graphics Processor - Intel® HD Graphics 520: 1 x HDMI 1.4, 1 x Display Port, 1 x LVDS or eDP, 3 independent display outputs	Integrated Graphics Processor - Intel® HD Graphics 510: 1 x HDMI 1.4, 1 x Display Port, 1 x LVDS or eDP, 3 independent display outputs	Integrated Graphics Processor - Intel® HD Graphics 500: 1 x HDMI 1.4, 1 x Display Port, 1 x LVDS or eDP, 3 independent display outputs	Integrated Graphics Processor - Intel® HD Graphics: 1 x HDMI 1.4, 1 x VGA, 1 x LVDS, 2 independent display outputs
Audio	Realtek® ALC269	Realtek® ALC269	Realtek® ALC269	Realtek® ALC887 + ALC105 Amplifier
Storage	2 x SATA 6Gb/s ports (RAID 0/1/5) (incl. 1 x SATA supports SATA DOM)	2 x SATA 6Gb/s ports (incl. 1 x SATA supports SATA DOM)	2 x SATA 6Gb/s ports (1 x switches with mSATA) (incl. 1 x SATA supports SATA DOM)	1 x SATA 6Gb/s port (switches with mSATA) 2 x SATA 3Gb/s ports eMMC (Optional)
Expansion Slots	1 x 2280/2242 M.2 M-Key (PCIe x2, SATA 6Gb/s) 1 x Full-size Mini PCIe	1 x 2280/2242 M.2 M-Key (PCIe x2, SATA 6Gb/s) 1 x Full-size Mini PCIe	1 x Full-size Mini PCIe/mSATA 1 x Half-size Mini PCIe (PCIe Only)	1 x PCIe x4 (Gen2 x1) 1 x mSATA (SATA 6Gb/s) 1 x Half-size Mini PCIe
Internal I/O	1 x 4-pin ATX main power connector 2 x SATA Power connectors 1 x CPU fan header 1 x System fan header 1 x Front panel header 1 x Front panel audio header 1 x 2W Speaker out header 2 x USB 2.0 headers 2 x USB 3.0 headers 2 x COM headers (RS-232) 2 x COM headers (RS-232/422/485 & RI/5V/12V) 1 x LCD_VCC Pin header 1 x Backlight Control header 1 x GPIO (8 bits) & SMBUS header 1 x Buzzer	1 x 4-pin ATX main power connector 2 x SATA Power connectors 1 x CPU fan header 1 x System fan header 1 x Front panel header 1 x Front panel audio header 1 x 2W Speaker out header 2 x USB 3.0 headers 2 x COM headers (RS-232) 2 x COM headers (RS-232/422/485 & RI/5V/12V) 1 x LCD_VCC Pin header 1 x Backlight Control header 1 x GPIO (8 bits) & SMBUS header 1 x Buzzer	1 x 4-pin ATX main power connector 2 x SATA Power connectors 1 x CPU fan header 1 x System fan header, 1 x Front panel header, 1 x Front panel audio header 1 x 2W Speaker out header 1 x USB 2.0 header 2 x USB 3.0 headers 4 x COM headers (RS-232) 2 x COM headers (RS-232/422/485 & RI/5V/12V) 1 x LCD_VCC Pin header 1 x Backlight Control header 1 x PS/2 KB/MS Connector 1 x GPIO (8 bits) & SMBUS header, 1 x Buzzer	1 x 2-pin ATX main power connector 1 x SATA power connector 1 x CPU fan header 1 x System fan header 1 x Front panel header 1 x Front panel audio header 1 x 3W Speaker out header 1 x DMIC header 3 x USB 2.0 headers 1 x COM header (RS-232) 1 x FPD (For LVDS 19V) 1 x FPD_SW 1x3 (For Panel Power SW) 1 x LCD_VCC Pin header 1 x Backlight Control header 1 x LPT header 1 x Micro SD connector
Rear I/O	2 x Audio Jacks (Line out, Mic in) 1 x HDMI, 1 x Display Port 2 x RJ45 LAN ports 2 x USB 2.0, 2 x USB 3.0 1 x DC Jack (+12VDC)	2 x Audio Jacks (Line out, Mic in) 1 x HDMI, 1 x Display Port 2 x RJ45 LAN ports 2 x USB 2.0, 2 x USB 3.0 1 x DC Jack (+12VDC)	2 x Audio Jacks (Line out, Mic in) 1 x HDMI, 1 x Display Port 2 x RJ45 LAN ports 2 x USB 2.0, 2 x USB 3.0 1 x DC Jack (+12VDC)	2 x Audio Jacks (Line out, Mic in) 1 x HDMI, 1 x VGA 1 x RJ45 LAN port 2 x USB 2.0, 1 x USB 3.0 1 x DC Jack (+12V/+19VDC)
TPM	1 x TPM header	1 x TPM header	1 x TPM header	—
Operating Temp.	0°C to 60°C	0°C to 60°C	0°C to 60°C	0°C to 60°C
Ordering Information	9MKLP3CIMR-SI (Box packing)	9MKLPCCIMR-SI (Box packing)	9MZAPLBINR-SI (Bulk packing) 9MZAPLBIMR-SI (Box packing)	9MZBAYAINR-SI (Bulk packing)

QBiP Series (3.5" SBC)



QBiP Series (3.5" SBC)

Model Name	QBiP-8565A/ QBiP-8265A/ QBiP-8145A	QBiP-7600A/ QBiP-7200A/ QBiP-7100A	QBiP-3965A
CPU	Intel® Core™ i7-8565U Processor, 14nm, 4 cores, 8 threads, up to 4.6 GHz, TDP 15W (QBiP-8565A) Intel® Core™ i5-8265U Processor, 14nm, 4 cores, 8 threads, up to 3.9 GHz, TDP 15W (QBiP-8265A) Intel® Core™ i3-8145UE Processor, 14nm, 2 cores, 4 threads, up to 3.9 GHz, TDP 15W (QBiP-8145A)	Intel® Core™ i7-7600U Processor, 14nm, 2 cores, 4 threads, up to 3.9 GHz, TDP 15W (QBiP-7600A) Intel® Core™ i5-7200U Processor, 14nm, 2 cores, 4 threads, up to 3.1GHz, TDP 15W (QBiP-7200A) Intel® Core™ i3-7100U Processor, 14nm, 2 cores, 4 threads, 2.4 GHz, TDP 15W (QBiP-7100A)	Intel® Celeron® Processor 3965U, 14nm, 2 cores, 2 threads, 2.2 GHz, TDP 15W (QBiP-3965A)
Socket	FCBGA1528	FCBGA1356	FCBGA1356
Chipset	—	—	—
Memory	2 x DDR4 SO-DIMM sockets, Max. Capacity 32 GB, Support Dual Channel DDR4 2400 MHz	2 x DDR4 SO-DIMM sockets, Max. Capacity 32 GB, Support Dual Channel DDR4 2133 MHz	2 x DDR4 SO-DIMM sockets, Max. Capacity 32 GB, Support Dual Channel DDR4 2133 MHz
Ethernet	2 x GbE LAN ports (Intel® I219V and Intel® I211AT)	2 x GbE LAN ports (Intel® I219V and Intel® I211AT) (7600A: Intel® I219LM and Intel® I211AT)	2 x GbE LAN ports (Intel® I219V and Intel® I211AT)
Graphic	Integrated Graphics Processor - Intel® UHD Graphics 620: 2 x HDMI 1.4, 1 x LVDS 3 independent display outputs	Integrated Graphics Processor - Intel® HD Graphics 620: 1 x HDMI 2.0, 1 x Display Port, 1 x LVDS 3 independent display outputs	Integrated Graphics Processor - Intel® HD Graphics 610: 1 x HDMI 2.0, 1 x Display Port, 1 x LVDS 3 independent display outputs
Audio	Realtek® ALC269	Realtek® ALC269	
Storage	2 x SATA 6Gb/s ports (RAID 0/1/5)	2 x SATA 6Gb/s ports (RAID 0/1/5)	2 x SATA 6Gb/s ports
Expansion Slots	1 x 2280 M.2 M-Key (PCIe x4, SATA 6Gb/s) 1 x 2230 M.2 E-Key 1 x Full-size Mini PCIe with SIM slot	1 x 2280 M.2 M-Key (PCIe x4, SATA 6Gb/s) 1 x 2230 M.2 E-Key 1 x Full-size Mini PCIe with SIM slot	1 x 2280 M.2 M-Key (SATA 6Gb/s) 1 x 2230 M.2 E-Key 1 x Full-size Mini PCIe with SIM slot
Internal I/O	1 x 4-pin box power connector (+9V~36VDC) (48VDC optional) 2 x SATA power headers 1 x CPU fan header 1 x System fan header 1 x Front panel header 1 x Front panel audio header 1 x 2W Speaker out header 2 x USB 2.0 headers 3 x COM headers (RS-232) 1 x Backlight Control header 1 x AT/ATX mode select jumper 1 x GPIO (8 bits) & SMBUS header	1 x 4-pin box power connector (+9V~36VDC) 2 x SATA power headers 1 x CPU fan header 1 x System fan header 1 x Front panel header 1 x Front panel audio header 1 x 2W Speaker out header 2 x USB 2.0 headers 3 x COM headers (RS-232) 1 x Backlight Control header 1 x AT/ATX mode select jumper 1 x GPIO (8 bits) & SMBUS header	1 x 4-pin box power connector (+9V~36VDC) 2 x SATA power headers 1 x CPU fan header 1 x System fan header 1 x Front panel header 1 x Front panel audio header 1 x 2W Speaker out header 2 x USB 2.0 headers 3 x COM headers (RS-232) 1 x Backlight Control header 1 x AT/ATX mode select jumper 1 x GPIO (8 bits) & SMBUS header
Rear I/O	1 x COM port (RS-232/422/485 & RI/5V/12V), 2 x HDMI, 2 x RJ45 LAN ports, 4 x USB 3.1 Gen2	1 x COM port (RS-232/422/485 & RI/5V/12V), 1 x HDMI, 1 x Display Port, 2 x RJ45 LAN ports, 4 x USB 3.0	1 x COM port (RS-232/422/485 & RI/5V/12V), 1 x HDMI, 1 x Display Port, 2 x RJ45 LAN ports, 4 x USB 3.0
TPM	1 x TPM header	1 x TPM header	
Operating Temp.	0°C to 60°C	0°C to 60°C	
Ordering Information	9MWHLUASMR-SI (Box packing) (QBiP-8565A) 9MWHLUBSMR-SI (Box packing) (QBiP-8265A) 9MWHLUCSMR-SI (Box packing) (QBiP-8145A)	9MFLP7BSMR-SI (Box packing) (QBiP-7600A) 9MFLP5ASNR-SI (Bulk packing) (QBiP-7200A) 9MFLP5ASMR-SI (Box packing) (QBiP-7200A) 9MFLP3ASNR-SI (Bulk packing) (QBiP-7100A) 9MFLP3ASMR-SI (Box packing) (QBiP-7100A)	9MFLPCASMR-SI (Box packing) (QBiP-3965A)
Heatsink P/N	25ST1-153108-A7R	25ST1-153108-A7R	25ST1-153108-A7R
Fan Module P/N	12SF2-01A073-00R	12SF2-01A073-00R	12SF2-01A073-00R
Heat Spreader P/N	25ST5-8265A0-A8R	25ST5-CKAC00-A8R	25ST5-CKAC00-A8R

QBiP Series (3.5" SBC)



Model Name	QBiP-4200A	QBiP-4200B/ QBiP-4200C/ QBiP-3350A	QBiP-E3940A
CPU	Intel® Pentium® Processor N4200, 14nm, 4 cores, 4 threads, up to 2.5 GHz, TDP 6W	Intel® Pentium® Processor N4200, 14nm, 4 cores, 4 threads, up to 2.5 GHz, TDP 6W (QBiP-4200B/ 4200C) Intel® Celeron® Processor N3350, 14nm, 2 cores, 2 threads, up to 2.4 GHz, TDP 6W (QBiP-3350A)	Intel® Atom® x5-E3940 Processor, 14nm, 4 cores, 4 threads, up to 1.8 GHz, TDP 9.5W
Socket	FCBGA1296	FCBGA1296	FCBGA1296
Chipset	—	—	—
Memory	2 x DDR3L SO-DIMM sockets, Max. Capacity 8 GB, Support Dual Channel DDR3L 1866 MHz	2 x DDR3L SO-DIMM sockets, Max. Capacity 8 GB, Support Dual Channel DDR3L 1866 MHz	2 x DDR3L SO-DIMM sockets, Max. Capacity 8 GB, Support Dual Channel DDR3L 1866 MHz
Ethernet	2 x GbE LAN ports (Intel® I211AT)	2 x GbE LAN ports (Intel® I211AT)	2 x GbE LAN ports (Intel® I211AT)
Graphic	Integrated Graphics Processor - Intel® HD Graphics 505: 1 x HDMI 1.4, 1 x VGA, 1 x LVDS or eDP 3 independent display outputs	Integrated Graphics Processor - Intel® HD Graphics 505: 1 x HDMI 1.4, 1 x VGA, 1 x LVDS 3 independent display outputs	Integrated Graphics Processor - Intel® HD Graphics 500: 1 x HDMI 1.4, 1 x VGA, 1 x LVDS 3 independent display outputs
Audio	Realtek® ALC269	Realtek® ALC269	Realtek® ALC269
Storage	1 x SATA 6Gb/s port 1 x eMMC 32GB	1 x SATA 6Gb/s port 1 x eMMC 32GB (4200B only)	1 x SATA 6Gb/s port
Expansion Slots	1 x 2242 M.2 M-Key (SATA 6Gb/s) 1 x Full-size Mini PCIe with SIM slot	1 x 2242 M.2 M-Key (SATA 6Gb/s) 1 x Full-size Mini PCIe with SIM slot	1 x 2242 M.2 M-Key (SATA 6Gb/s) 1 x Full-size Mini PCIe with SIM slot
Internal I/O	1 x 4-pin box power connector (+9V~36VDC) 1 x SATA power header 1 x System fan header 1 x Front panel header 1 x Front panel audio header 1 x 2W Speaker out header 2 x USB 2.0 headers 3 x COM headers (RS-232) 1 x COM header (RS-232/422/485 & RI/5V/12V) 1 x Backlight Control header 1 x AT/ATX mode select jumper 1 x GPIO (8 bits) & SMBUS header 1 x Buzzer header	1 x 4-pin box power connector (+9V~36VDC) 1 x SATA power header 1 x System fan header 1 x Front panel header 1 x Front panel audio header 1 x 2W Speaker out header 4 x USB 2.0 headers 3 x COM headers (RS-232) 1 x COM header (RS-232/422/485 & RI/5V/12V) 1 x Backlight Control header 1 x AT/ATX mode select jumper 1 x GPIO (8 bits) & SMBUS header 1 x Buzzer header	1 x 4-pin box power connector (+9V~36VDC) 1 x SATA power header 1 x System fan header 1 x Front panel header 1 x Front panel audio header 1 x 2W Speaker out header 4 x USB 2.0 headers 3 x COM headers (RS-232) 1 x COM header (RS-232/422/485 & RI/5V/12V) 1 x Backlight Control header 1 x AT/ATX mode select jumper 1 x GPIO (8 bits) & SMBUS header 1 x Buzzer header
Rear I/O	1 x Headphone Jack 1 x HDMI 1 x VGA 2 x RJ45 LAN ports 2 x USB 3.0	1 x Headphone Jack 1 x HDMI 1 x VGA 2 x RJ45 LAN ports 2 x USB 3.0	1 x Headphone Jack 1 x HDMI 1 x VGA 2 x RJ45 LAN ports 2 x USB 3.0
TPM	1 x TPM header	1 x TPM header	1 x TPM header
Operating Temp.	0°C to 60°C	0°C to 60°C	0°C to 60°C
Ordering Information	9MZAPLASNR-SI (Bulk packing) 9MZAPLASMR-SI (Box packing)	9MZAPLCSNR-SI (Bulk packing) (QBiP-4200B) 9MZAPLCSMR-SI (Box packing) (QBiP-4200B) 9MZAPLDSMR-SI (Box packing) (QBiP-4200C) 9MZAPLESMR-SI (Box packing) (QBiP-3350A)	9MAPLKASMR-SI (Box packing)
Heatsink P/N	25ST1-153109-A7R	25ST1-153109-A7R	25ST1-113103-A7R
Fan Module P/N	—	—	—
Heat Spreader P/N	25ST5-CBAB00-A8R	25ST5-CBAB00-A8R	—

QBiP Series (3.5" SBC)



Model Name	QBiP-1900A	QBiP-1605A	QBiP-1606A
CPU	Intel® Celeron® Processor J1900, 22nm, 4 cores, 4 threads, up to 2.42GHz, TDP 10W	AMD® RYZEN™ Embedded V1605B, 14nm, 4 cores, 8 threads, 2.0 GHz, up to 3.6 GHz, TDP 25W	AMD® RYZEN™ Embedded R1606G, 14nm, 2 cores, 4 threads, 2.6 GHz, up to 3.5 GHz, TDP 25W
Socket	FCBGA1170	FP5 type 1	FP5 type 1
Chipset	—	—	—
Memory	1 x DDR3L SO-DIMM socket, Max. Capacity 8 GB, Support Single Channel DDR3L 1333 MHz	2 x DDR4 SO-DIMM sockets, Max. Capacity 32 GB, Support Dual Channel DDR4 2400 MHz	2 x DDR4 SO-DIMM sockets, Max. Capacity 32 GB, Support Dual Channel DDR4 2400 MHz
Ethernet	2 x GbE LAN ports (Intel® I211AT)	2 x GbE LAN ports (Realtek® RTL8111HS)	2 x GbE LAN ports (Realtek® RTL8111HS)
Graphic	Integrated Graphics Processor - Intel® HD Graphics: 1 x HDMI 1.4, 1 x VGA, 1 x LVDS 2 independent display outputs	Integrated Graphics Processor - AMD® Radeon™ Vega 8 Graphics: 4 x HDMI 2.0, 1 x eDP (share from HDMI) 4 independent display outputs	Integrated Graphics Processor - AMD® Radeon™ Vega 3 Graphics: 3 x HDMI 2.0, 1 x eDP (share from HDMI) 3 independent display outputs
Audio	Realtek® ALC269	Realtek® ALC269	Realtek® ALC269
Storage	1 x SATA 3Gb/s port	1 x SATA 6Gb/s port	1 x SATA 6Gb/s port
Expansion Slots	1 x 2280 M.2 M-Key (SATA 3Gb/s) 1 x Full-size Mini PCIe with SIM slot	1 x 2280 M.2 M-Key (PCIe x4, SATA 6Gb/s) 1 x 2230 M.2 E-Key 1 x Full-size Mini PCIe with SIM slot	1 x 2280 M.2 M-Key (PCIe x4, SATA 6Gb/s) 1 x 2230 M.2 E-Key 1 x Full-size Mini PCIe with SIM slot
Internal I/O	1 x 4-pin box power connector (+9V~36VDC) (+48VDC optional) 1 x SATA power header 1 x System fan header 1 x Front panel header 1 x Front panel audio header 1 x 2W Speaker out header 4 x USB 2.0 headers 3 x COM headers (RS-232) 1 x COM header (RS-232/422/485 & RI/5V/12V) 1 x Backlight Control header 1 x AT/ATX mode select jumper 1 x GPIO (8 bits) & SMBUS header 1 x Buzzer header	1 x 4-pin box power connector (+9V~36VDC) 1 x SATA power header 1 x CPU fan header 1 x System fan header 1 x Front panel header 1 x Front panel audio header 1 x 2W Speaker out header 4 x USB 2.0 headers 2 x COM headers (RS-232) 2 x COM headers (RS-232/422/485 & RI/5V/12V) 1 x Backlight Control header 1 x AT/ATX mode select jumper 1 x eDP/HDMI jumper 1 x GPIO (8 bits) & SMBUS header 1 x Buzzer	1 x 4-pin box power connector (+9V~36VDC) 1 x SATA power header 1 x CPU fan header 1 x System fan header 1 x Front panel header 1 x Front panel audio header 1 x 2W Speaker out header 4 x USB 2.0 headers 2 x COM headers (RS-232) 2 x COM headers (RS-232/422/485 & RI/5V/12V) 1 x Backlight Control header 1 x AT/ATX mode select jumper 1 x eDP/HDMI jumper 1 x GPIO (8 bits) & SMBUS header 1 x Buzzer
Rear I/O	1 x Headphone Jack 1 x HDMI 1 x VGA 2 x RJ45 LAN ports 1 x USB 2.0 1 x USB 3.0	4 x HDMI 2 x RJ45 LAN ports 2 x USB 3.0	3 x HDMI 2 x RJ45 LAN ports 2 x USB 3.0
TPM	1 x TPM header	Onboard TPM 2.0 security chip INFINEON SLB9665TT2.0	Onboard TPM 2.0 security chip INFINEON SLB9665TT2.0
Operating Temp.	0°C to 60°C	0°C to 60°C	0°C to 60°C
Ordering Information	9MBAYTASNR-SI (Bulk packing) 9MBAYTASMR-SI (Box packing)	9MRZNVMSNR-SI (Bulk packing) 9MRZNVMSMR-SI (Box packing)	9MRZNRMSMR-SI (Box packing)
Heatsink P/N	25ST1-153107-A7R	25ST1-113104-A7R	TBD
Fan Module P/N	—	12SF2-01A073-00R	TBD
Heat Spreader P/N	25ST5-CBAB00-A8R	25ST5-QP1600-A8R	TBD

QBiP Wide Temperature Series



Model Name	QBiP-7200AT/ QBiP-7100AT	QBiP-E3940AT	QBiP-1900AT
CPU	Intel® Core™ i5-7200U Processor, 14nm, 2 cores, 4 threads up to 3.1 GHz, TDP 15W (QBiP-7200AT) Intel® Core™ i3-7100U Processor, 14nm, 2 cores, 4 threads, up to 2.4 GHz, TDP 15W (QBiP-7100AT)	Intel® Atom® x5-E3940 Processor, 14nm, 4 cores, 4 threads, up to 1.8 GHz, TDP 9.5W	Intel® Celeron® Processor J1900, 22nm, 4 cores, 4 threads, up to 2.42 GHz, TDP 10W
Socket	FCBGA1356	FCBGA1296	FCBGA1170
Chipset	—	—	—
Memory	2 x DDR4 SO-DIMM sockets, Max. Capacity 32 GB, Support Dual Channel DDR4 2133 MHz	2 x DDR3L SO-DIMM sockets, Max. Capacity 8 GB, Support Dual Channel DDR3L 1866 MHz	1 x DDR3L SO-DIMM socket, Max. Capacity 8 GB, Support Single Channel DDR3L 1333 MHz
Ethernet	2 x GbE LAN ports (Intel® I219V and Intel® I211AT)	2 x GbE LAN ports (Intel® I211AT)	2 x GbE LAN ports (Intel® I211AT)
Graphic	Integrated Graphics Processor - Intel® HD Graphics 620: 1 x HDMI 2.0 1 x Display Port 1 x LVDS 3 independent display outputs	Integrated Graphics Processor - Intel® HD Graphics 500: 1 x HDMI 1.4 1 x VGA 1 x LVDS 3 independent display outputs	Integrated Graphics Processor - Intel® HD Graphics: 1 x HDMI 1.4 1 x VGA 1 x LVDS 2 independent display outputs
Audio	Realtek® ALC269	Realtek® ALC269	Realtek® ALC269
Storage	2 x SATA 6Gb/s ports (RAID 0/1/5)	1 x SATA 6Gb/s port	1 x SATA 3Gb/s port
Expansion Slots	1 x 2280 M.2 M-Key (PCIe x4, SATA 6Gb/s) 1 x 2230 M.2 E-Key 1 x Full-size Mini PCIe with SIM slot	1 x 2242 M.2 M-Key (SATA 6Gb/s) 1 x Full-size Mini PCIe with SIM slot	1 x 2280 M.2 M-Key (SATA 3Gb/s) 1 x Full-size Mini PCIe with SIM slot
Internal I/O	1 x 4-pin box power connector (+9V~36VDC) 2 x SATA power headers 1 x CPU fan header 1 x System fan header 1 x Front panel header 1 x Front panel audio header 1 x 2W Speaker out header 2 x USB 2.0 headers 3 x COM headers (RS-232) 1 x Backlight Control header 1 x AT/ATX mode select jumper 1 x GPIO (8 bits) & SMBUS header	1 x 4-pin box power connector (+9V~36VDC) 1 x SATA power header 1 x System fan header 1 x Front panel header 1 x Front panel audio header 1 x 2W Speaker out header 4 x USB 2.0 headers 3 x COM headers (RS-232) 1 x COM header (RS-232/422/485 & RI/5V/12V) 1 x Backlight Control header 1 x AT/ATX mode select jumper 1 x GPIO (8 bits) & SMBUS header 1 x Buzzer header	1 x 4-pin box power connector (+9V~36VDC) (+48VDC optional) 1 x SATA power header 1 x System fan header 1 x Front panel header 1 x Front panel audio header 1 x 2W Speaker out header 4 x USB 2.0 headers 3 x COM headers (RS-232) 1 x COM header (RS-232/422/485 & RI/5V/12V) 1 x Backlight Control header 1 x AT/ATX mode select jumper 1 x GPIO (8 bits) & SMBUS header 1 x Buzzer header
Rear I/O	1 x COM port (RS-232/422/485 & RI/5V/12V) 1 x HDMI 1 x Display Port 2 x RJ45 LAN ports 4 x USB 3.0	1 x Headphone Jack 1 x HDMI 1 x VGA 2 x RJ45 LAN ports 2 x USB 3.0	1 x Headphone Jack 1 x HDMI 1 x VGA 2 x RJ45 LAN ports 1 x USB 2.0 1 x USB 3.0
TPM	1 x TPM header	1 x TPM header	1 x TPM header
Operating Temp.	-20°C to 70°C	-40°C to 85°C	-40°C to 85°C
Ordering Information	9MFLP5ASMR-SI1 (Box packing) (QBiP-7200AT) 9MFLP3ASMR-SI1 (Box packing) (QBiP-7100AT)	9MAPLKASMR-SI1 (Box packing)	9MBAYTASMR-SI1 (Box packing)

QBi Series (10 x 10 Embedded Compact Board)



QBi Series (10 x 10 Embedded Compact Board)

Model Name	QBi-8565A/ QBi-8265A/ QBi-8145A	QBi-7100B	QBi-3965B
CPU	Intel® Core™ i7-8565U Processor 14nm, 4 cores, 8 threads, up to 4.6 GHz, TDP 15W (QBi-8565A) Intel® Core™ i5-8265U Processor 14nm, 4 cores, 8 threads, up to 3.9 GHz, TDP 15W (QBi-8265A) Intel® Core™ i3-8145UE Processor 14nm, 2 cores, 4 threads, up to 3.9 GHz, TDP 15W (QBi-8145A)	Intel® Core™ i3-7100U Processor, 14nm, 2 cores, 4 threads, 2.4 GHz, TDP 15W	Intel® Celeron® Processor 3965U 14nm, 2 cores, 2 threads, 2.2 GHz, TDP 15W
Socket	FCBGA1528	FCBGA1356	FCBGA1356
Chipset	—	—	—
Memory	2 x DDR4 SO-DIMM sockets, Max. Capacity 32 GB, Support Dual Channel DDR4 2400 MHz	2 x DDR4 SO-DIMM sockets, Max. Capacity 32 GB, Support Dual Channel DDR4 2133 MHz	2 x DDR4 SO-DIMM sockets, Max. Capacity 32 GB, Support Dual Channel DDR4 2133 MHz
Ethernet	2 x GbE LAN ports (Intel® I219V and Realtek® RTL8111HS)	1 x GbE LAN port (Intel® I219V)	1 x GbE LAN port (Intel® I219V)
Graphic	Integrated Graphics Processor - Intel® UHD Graphics 620: 2 x HDMI 1.4 1 x eDP 3 independent display outputs	Integrated Graphics Processor - Intel® HD Graphics 620: 1 x HDMI 2.0 1 x Mini Display Port 1 x eDP 3 independent display outputs	Integrated Graphics Processor - Intel® HD Graphics 620: 1 x HDMI 2.0 1 x Mini Display Port 1 x eDP 3 independent display outputs
Audio	Realtek® ALC269	Intel® Integrated Audio	Intel® Integrated Audio
Storage	1 x SATA 6Gb/s ports (RAID 0/1)	1 x SATA 6Gb/s port (RAID 0/1)	1 x SATA 6Gb/s port
Expansion Slots	1 x 2280 M.2 M-Key (PCIe x4, SATA 6Gb/s) 1 x 2230 M.2 E-Key	1 x 2280 M.2 M-Key (PCIe x4, SATA 6Gb/s) 1 x 2230 M.2 E-Key	1 x 2280 M.2 M-Key (SATA 6Gb/s) 1 x 2230 M.2 E-Key
Internal I/O	1 x 2-pin power connector 1 x SATA/eDP power header 1 x CPU fan header 1 x Front panel header 1 x Front panel audio header/GPIO (8 bits) & SMBUS header 1 x USB 2.0 header 1 x Vertical USB 3.0 (Flexible to PCIe x1)	1 x 2-pin power connector 1 x SATA power header 1 x CPU fan header 1 x Front panel header 2 x USB 2.0 headers 1 x USB 3.0 header 1 x COM header (RS-232)	1 x 2-pin power connector 1 x SATA power header 1 x CPU fan header 1 x Front panel header 2 x USB 2.0 headers 1 x USB 3.0 header 1 x COM header (RS-232)
Front IO	2 x USB 3.1 Gen2 1 x Power button 1 x COM port (RS-232/422/485)	2 x USB 3.0 1 x Power button	2 x USB 3.0 1 x Power button
Rear IO	2 x HDMI 2 x RJ45 LAN ports 2 x USB 3.1 Gen2 1 x Screw type DC Jack (+9V~36VDC)	1 x HDMI 2.0 1 x Mini Display Port 1 x RJ45 LAN port 2 x USB 3.0 1 x DC Jack (+12V~24VDC)	1 x HDMI 2.0 1 x Mini Display Port 1 x RJ45 LAN port 2 x USB 3.0 1 x DC Jack (+12V~24VDC)
Side IO	—	—	—
TPM	—	—	—
Operating Temp.	0°C to 60°C	0°C to 60°C	0°C to 60°C
Ordering Information	9MWHLUAHMR-SI (Box packing) (QBi-8565A) 9MWHLUBHMR-SI (Box packing) (QBi-8265A) 9MWHLUCHMR-SI (Box packing) (QBi-8145A)	9MFLP3AHNR-SI (Bulk packing)	9MFLPCAHR-SI (Box packing)
Heatsink P/N	TBD	—	—
Fan Module P/N	TBD	25ST4-343202-C1R	25ST4-343202-C1R
Heat Spreader P/N	TBD	25ST5-CKAA01-A8R	25ST5-CKAA01-A8R

QBi Series (10 x 10 Embedded Compact Board)



Model Name	QBi-5005A/ QBi-5005B/ QBi-4000B	QBi-4200A/ QBi-4200B
CPU	Intel® Pentium® Silver J5005 Processor, 4 cores, 4 threads, up to 2.80 GHz, TDP 10W (QBi-5005A/ QBi-5005B) Intel® Celeron® Processor N4000, 2 Cores, 2 threads, up to 2.60 GHz, TDP 6W (QBi-4000B)	Intel® Pentium® Processor N4000 14nm, 4 cores, 4 threads, up to 2.5 GHz, TDP 6W
Socket	FCBGA1090	FCBGA1296
Chipset	—	—
Memory	1 x DDR4 SO-DIMM socket, Max. Capacity 8 GB, Support Single Channel DDR4 2400 MHz	1 x DDR3L SO-DIMM socket, Max. Capacity 8 GB, Support Single Channel DDR3L 1866 MHz
Ethernet	1 x GbE LAN port (Realtek® RTL8111HS)	1 x GbE LAN port (Realtek® RTL8111HS)
Graphic	QBi-5005A/ 5005B: Integrated Graphics Processor - Intel® UHD Graphics 605: QBi-4000B: Integrated Graphics Processor - Intel® UHD Graphics 600: 1 x HDMI 1.4 1 x VGA 1 x eDP 3 independent display outputs	Integrated Graphics Processor - Intel® HD Graphics 505: 1 x HDMI 1.4 1 x VGA 1 x eDP 3 independent display outputs
Audio	Realtek® ALC891	Realtek® ALC255
Storage	1 x SATA 6Gb/s port (7-pin) 1 x SATA 6Gb/s port (FFC) 1 x eMMC 32GB (5005A only)	1 x SATA 6Gb/s port 1 x eMMC 32GB (4200A only)
Expansion Slots	1 x 2230 M.2 E-Key	1 x 2230 M.2 E-Key
Internal I/O	1 x 2-pin power connector (Optional) 1 x SATA power header 1 x CPU fan header 1 x Front panel header 2 x USB 2.0 headers	1 x 2-pin power connector 1 x SATA power header 1 x CPU fan header 1 x Front panel header 2 x USB 2.0 headers 1 x USB 3.0 header 1 x COM header (RS-232)
Front IO	2 x USB 3.0 1 x Power button 1 x COM port (RS-232) 1 x Headphone Jack 1 x Microphone Jack	2 x USB 3.0 1 x Power button 1 x Audio Combo Jack (Headphone & Microphone)
Rear IO	1 x HDMI 1 x VGA 1 x RJ45 LAN port 2 x USB 3.0	1 x HDMI 1 x VGA 1 x RJ45 LAN port 2 x USB 3.0
Side IO	1 x DC Jack (+12V~19VDC)	1 x DC Jack (+12V~24VDC)
TPM	—	—
Operating Temp.	0°C to 60°C	0°C to 60°C
Ordering Information	9MZGLKAHNR-SI (Bulk packing) (QBi-5005A) 9MZGLKCHMR-SI (Box packing) (QBi-5005B) 9MZGLKBHMR-SI (Box packing) (QBi-4000B)	9MZAPLAHNR-SI (Bulk packing) (QBi-4200A) 9MZAPLBHMR-SI (Box packing) (QBi-4200B)
Heatsink P/N	12SP2-090019-00R	12SP2-090018-00R
Fan Module P/N	—	—
Heat Spreader P/N	25ST5-CGAA00-A8R	25ST5-CGAA00-A8R

GIGAIPC

GIGABYTE™
G R O U P

Building
a **SMARTER** Tomorrow



GIGAIPC

GIGAIPC CO., LTD.

GIGABYTE TECHNOLOGY GROUP

B1-A, No.205, Sec. 3, Beixin Rd., Xindian Dist.,
New Taipei City 23143, Taiwan (R.O.C)

TEL: +886-2-89131312 FAX: +886-2-89131332
Email: sales@gigaipc.com URL: www.gigaipc.com

技宸股份有限公司

技嘉集團

新北市 231 新店區北新路三段 205 號 B1-A

TEL: +886-2-89131312 FAX: +886-2-89131332
Email: sales@gigaipc.com URL: www.gigaipc.com



GMKT-C2020001