

## CIEPI-SI

PCIe-to-MXM adapter with 4 x HDMI 2.1 outputs, compatible with GIGAIPC MXM modules

## Startup Manual

### Packing List

Before you begin installing your card, please make sure that the following items have been shipped:

1. I/O Bracket x 1 (P/N: 25HB2-CIEP60-H5R)
2. Screws for I/O Bracket, M3x4L x 10 (P/N: 25982G-1C016-S00)

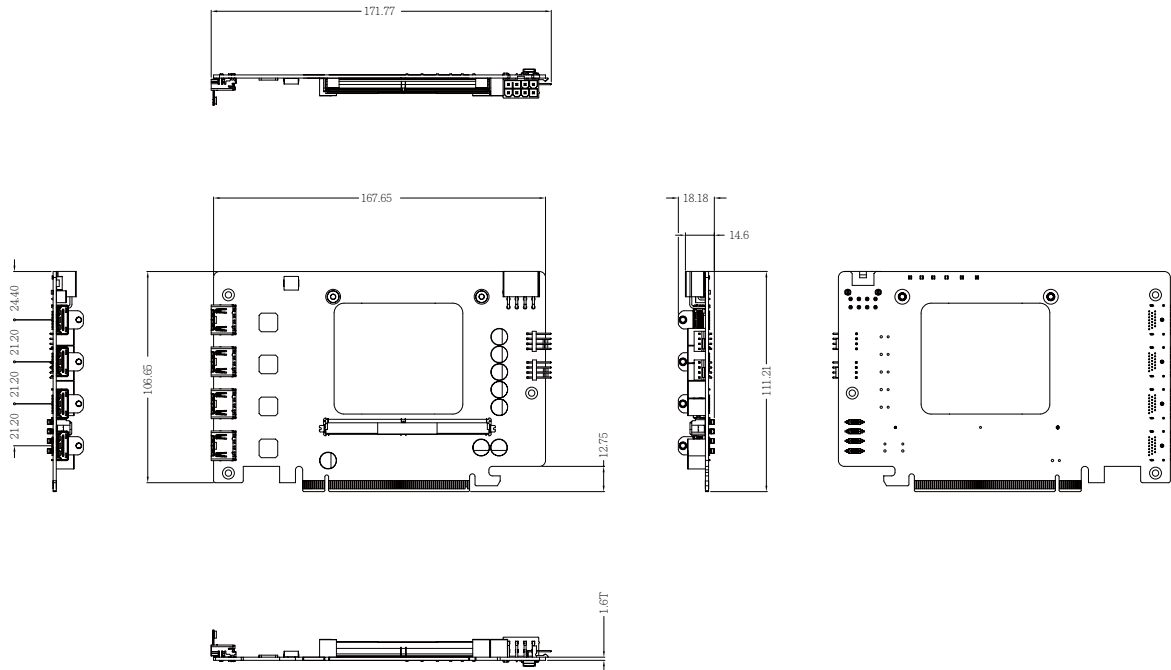
Caution: DANGER OF EXPLOSION IF BATTERY IS INCORRECTLY REPLACED. REPLACE ONLY WITH THE SAME OR EQUIVALENT TYPE RECOMMENDED BY THE MANUFACTURER, DISCARD USED BATTERIES ACCORDING TO THE MANUFACTURER'S INSTRUCTIONS.

### Specifications

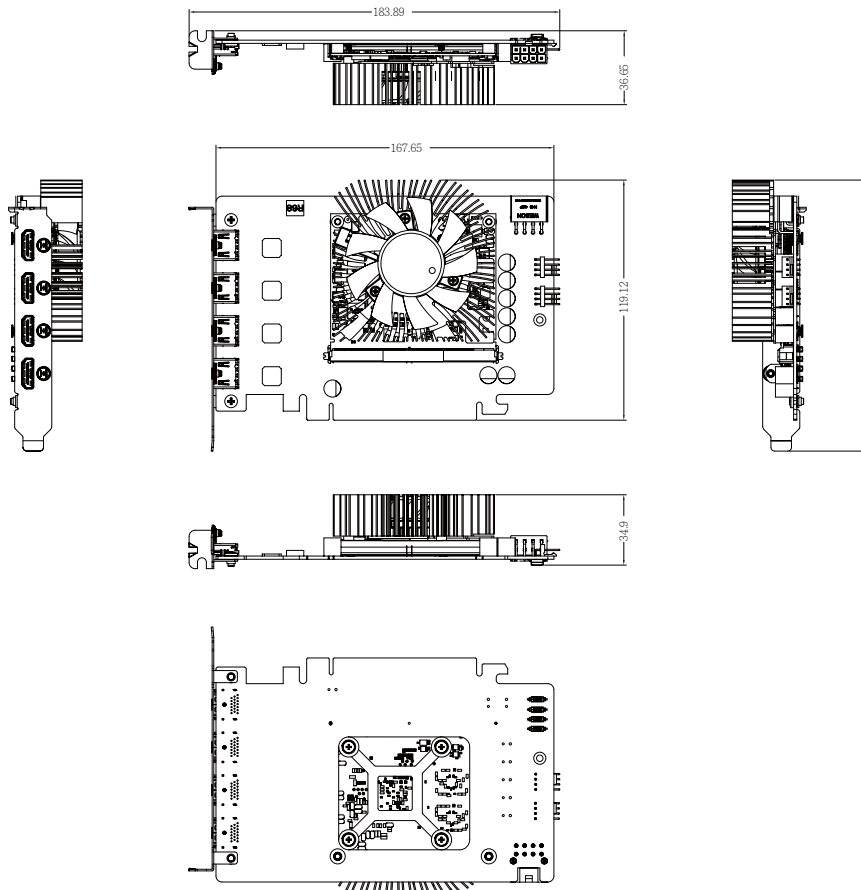
Dimension	167.65 x 111.15 (mm)
Supported MXM modules	MXM-A-A370M
PCI Express configurations	PCI Express 4.0x8
Display outputs	4 x HDMI 2.1 port, supporting a maximum resolution of 7680x4320 @60Hz
System Fan Connector	12V DC fan power connector
GPU Fan Connector	12V DC fan power connector
Power Connector	8-pin power connector
Operating Properties	Operating temperature: 0°C to 60°C Operating humidity: 0-90% (non-condensing) Non-operating temperature: -40°C to 85°C Non-operating humidity: 0%-95% (non-condensing)
Packing Content	Carton size: 310 x 257 x 234 (mm) Packing Capacity: 20pcs  Single Box size : 250 x183 x 35 (mm)  Including: I/O Bracket x 1 (P/N: 25HB2-CIEP60-H5R) Screws for I/O Bracket, M3x4L x 10 (P/N: 25982G-1C016-S00)
Order information	9CIEPIMR-SI (Box packing)

# Dimension

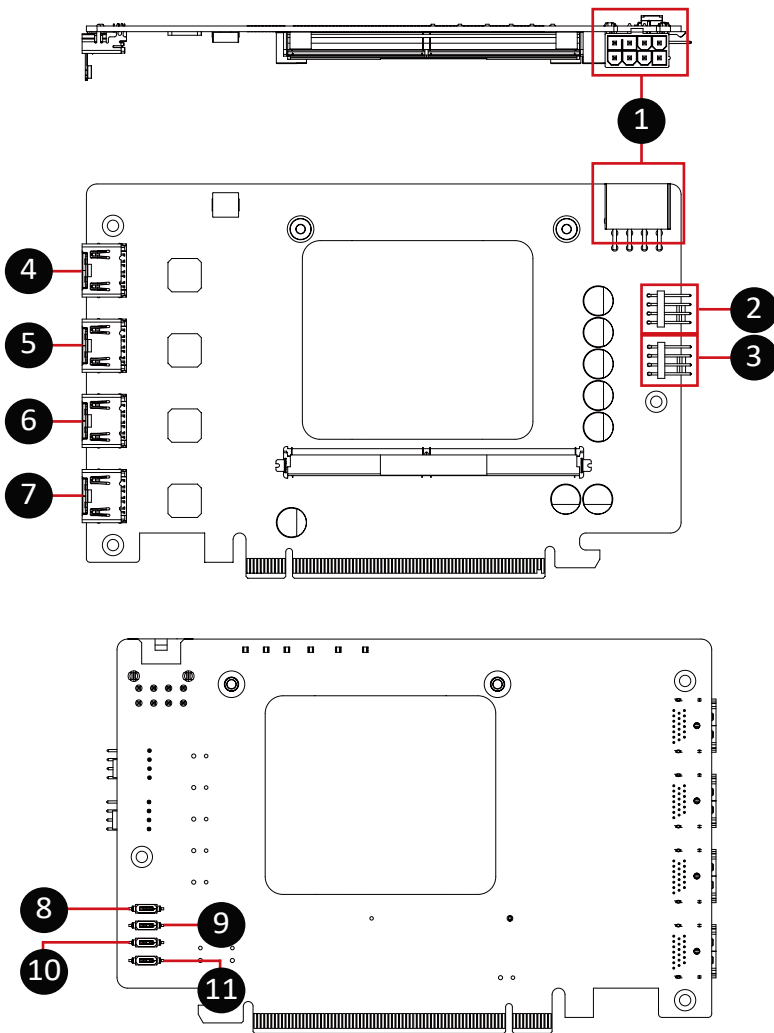
## CIEPI



## CIEPI with GIGAIPC MXM module MXM-A-A370M and Fansink (Optional)



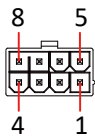
# Connectors and headers



No.	Code	Description
1	ATX12V1	ATX 12V power connector
2	GPU_FAN	GPU fan connector
3	SYS_FAN	System fan connector
4	HDMI2_1	HDMI 1 connector
5	HDMI2_2	HDMI 2 connector
6	HDMI2_3	HDMI 3 connector
7	HDMI2_4	HDMI 4 connector
8	X4	Set to support PCIe x4 MXM Modules
9	X8	Set to support PCIe x8 MXM Modules
10	X16	Set to support PCIe x16 MXM Modules
11	PER_LEVEL	To select GPU watts of MXM Modules

# Pin define

ATX 12V connector

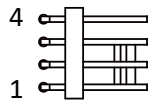


1	+12V
2	+12V
3	+12V
4	Sense 1
5	GND
6	Sense 0
7	GND
8	GND

Connector type

2x4pin header, pitch 4.2mm

GPU fan connector

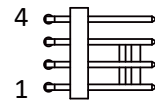


1	GND
2	12V
3	Detect
4	Speed control

Connector type

1x4pin header, pitch 2.54mm

System fan connector



1	GND
2	12V
3	Detect
4	Speed control

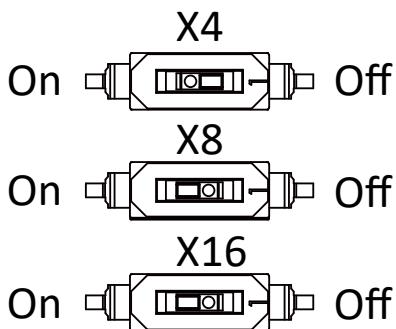
Connector type

1x4pin header, pitch 2.54mm

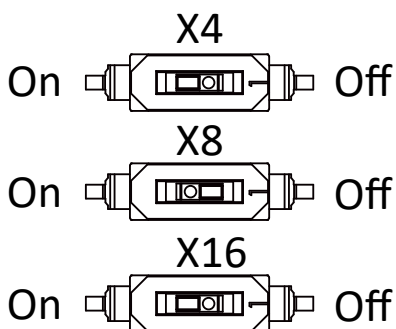
## DIP switch setting

(A).

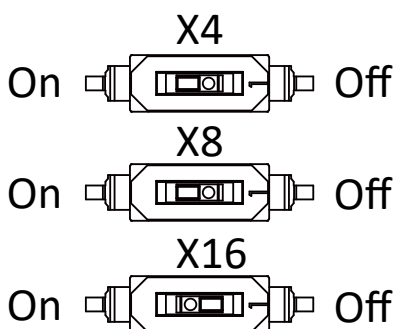
Set X4 DIP switch to "On" to support PCIe x4 MXM module.



Set X8 DIP switch to "On" to support PCIe x8 MXM module.

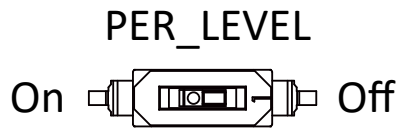


Set X16 DIP switch to "On" to support PCIe x16 MXM module.

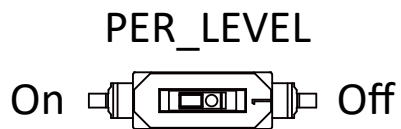


(B).

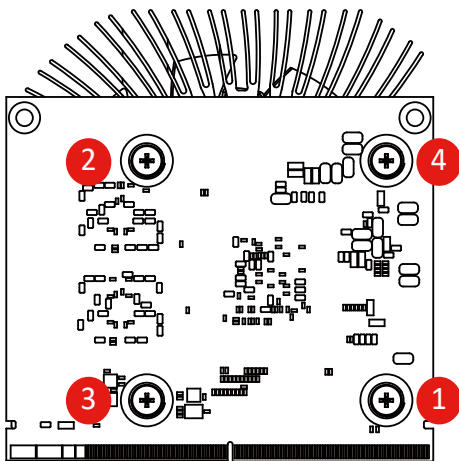
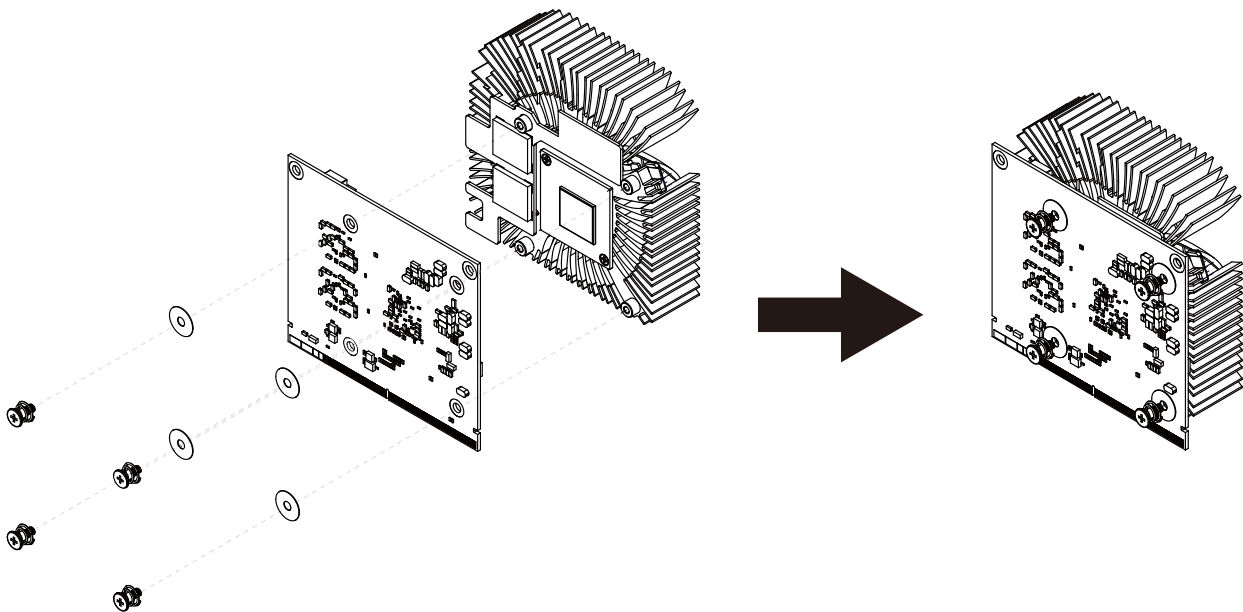
Set PER\_LEVEL DIP switch to "On" to support up to 75W GPU of MXM module.



Set PER\_LEVEL DIP switch to "Off" to support up to 125W GPU of MXM module.

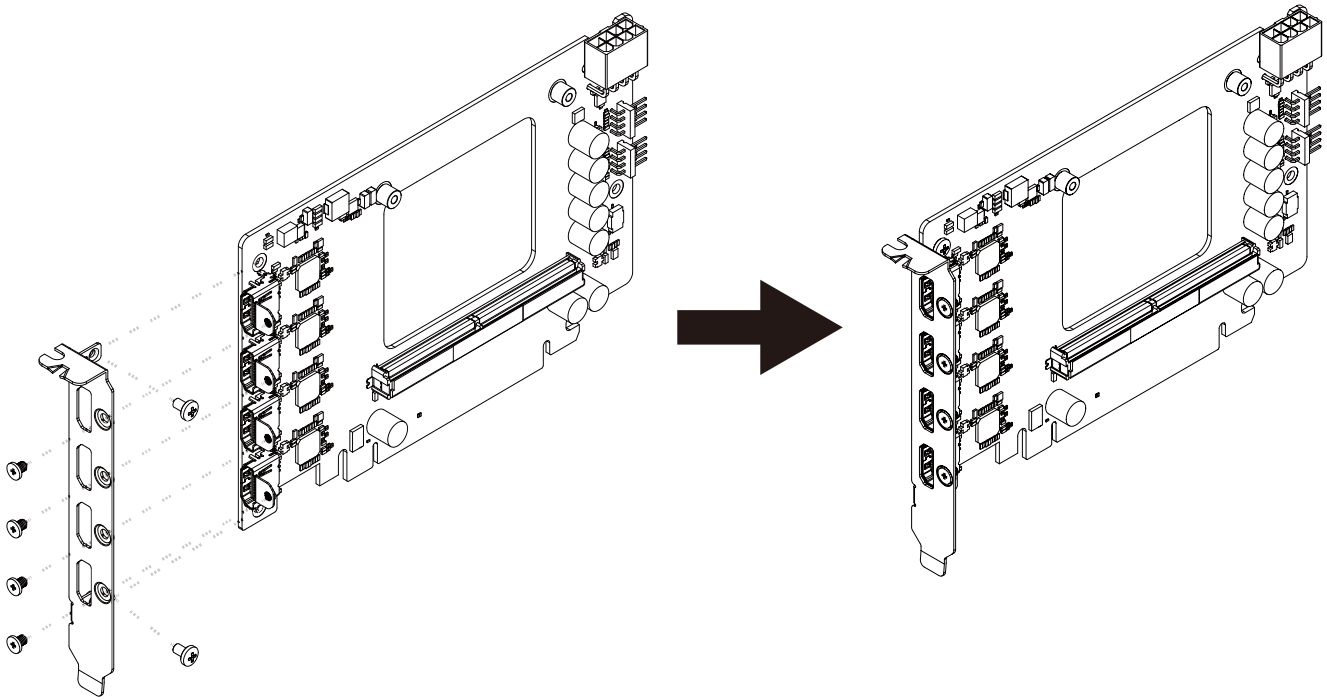


# MXM module Fansink assembly

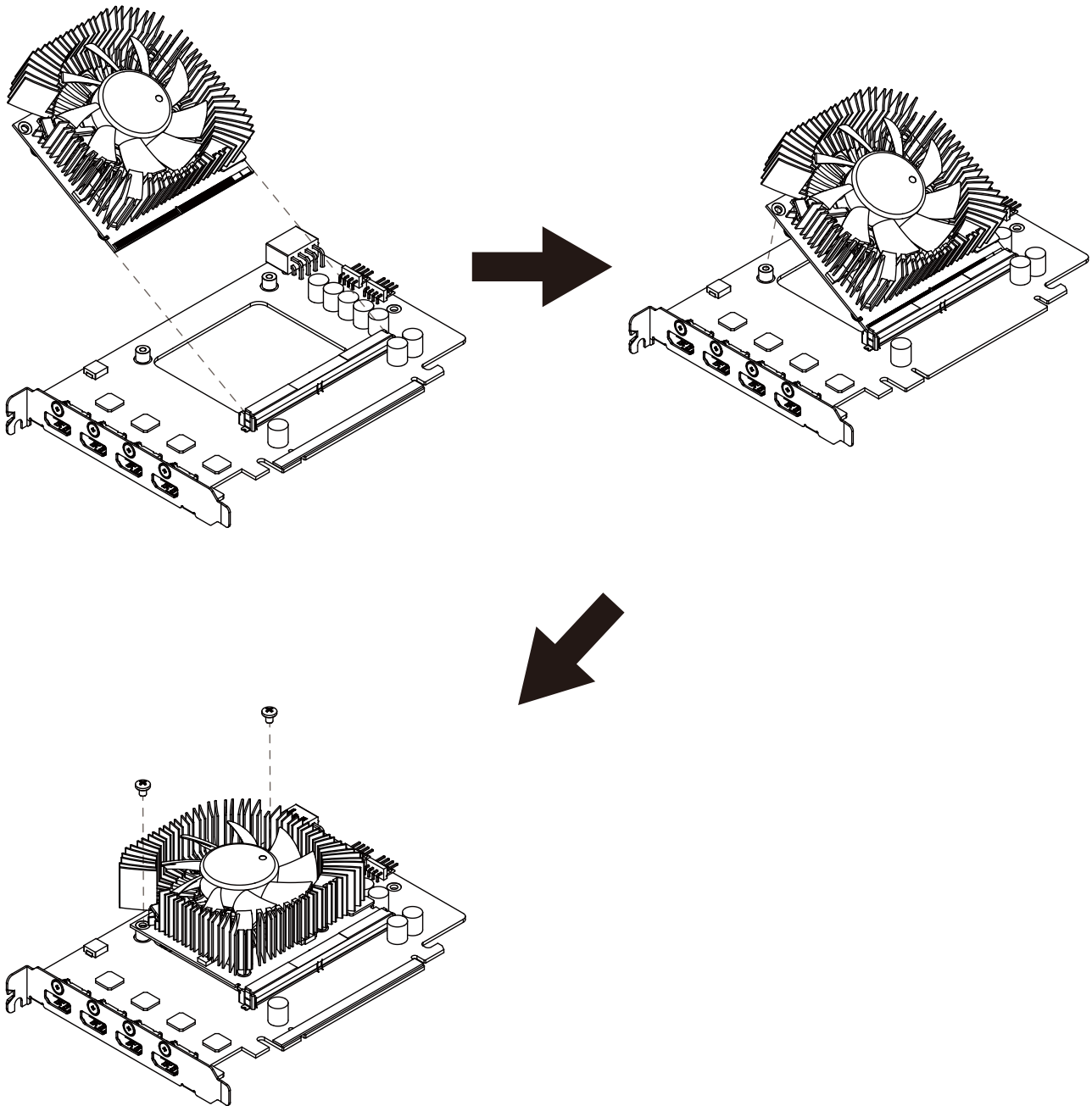


Torque	2.5 kgf-cm
<b>Assembly action</b>	
1>	Remove the release paper on the Fansink.
2>	Fix the Fansink with your hand to correct the corresponding hole position, and assemble the Fansink with washer & screws.
3>	Follow the order to assemble the Fansink with the suggest torsion.
4>	When removing, please reverse (spinning from position 4) to disassemble the Fansink.

# PCIe-to-MXM adapter I/O bracket assembly



## How to combine MXM module & PCIe-to-MXM adapter



※ The image is for reference only.  
The actual product could be slightly different