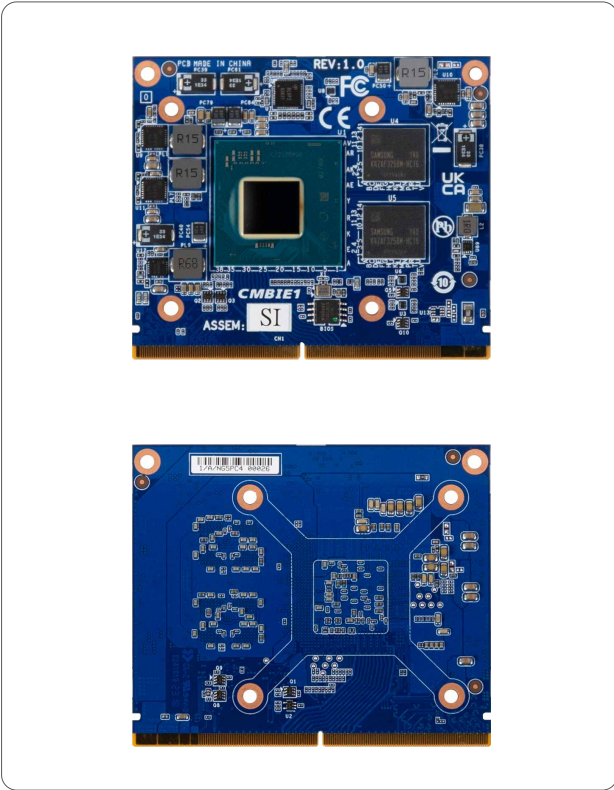


MXM-A-A370M (CMBIE1)

MXM module type A with Intel® Arc™ A370M Graphics



Features

- Intel® Arc™ A370M Graphics
- GDDR6 4GB 64 bit Memory
- Support Xe HPG Architecture
- Support for XMMAI acceleration
- Support 4 x DP2.0 (8K) resolution

Application Scenarios

- AI acceleration
- Digital Signage

Specifications

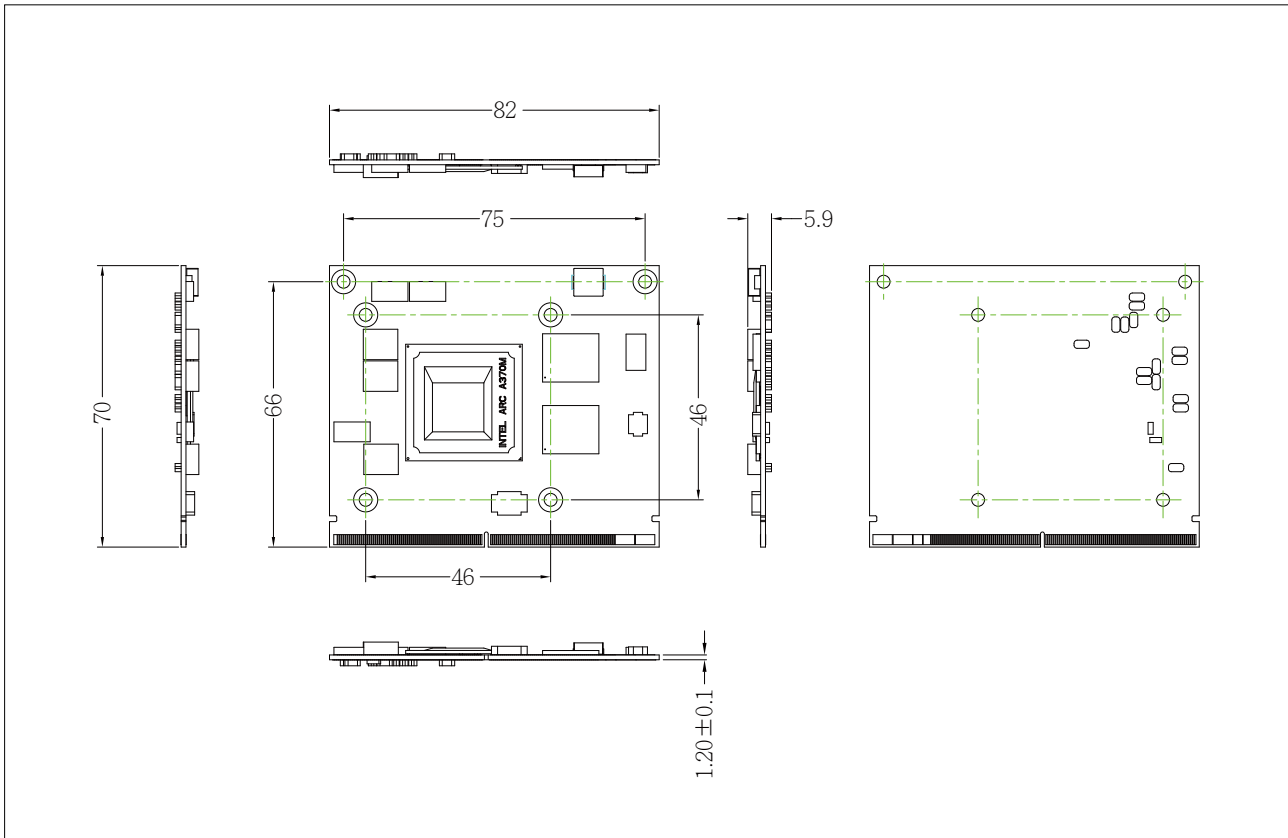
Dimension	MXM module type A 82W x 70D (mm)
GPU	Intel® Arc™ A370M Graphics Microarchitecture: Xe HPG Xe-cores: 8 Intel® XMMAI Engines: 128 Graphics clock: 1550 MHz TGP: 35-50W
PCI Express configurations	PCI Express 4.0x8
Memory	GDDR6 4GB, 64bit memory bus Memory speed: 14 Gbps Bandwidth: 112 GB/s
Graphics	Reserved 4 x DP 2.0 supporting a maximum resolution of 7680x4320 @60Hz (4 independent display outputs)
OS Compatibility	Windows 10/11 (x64)
Operating Properties	Operating temperature: 0°C to 60°C Operating humidity: 0-90% (non-condensing) Non-operating temperature: -40°C to 85°C Non-operating humidity: 0%-95% (non-condensing)
Packing Content	Carton size: 384 x 251 x 211 (mm) Packing Capacity: 20pcs Single Box size : 168 x 112 x 34 (mm)
Order Information	9CMBIE1MR-SI (Box packing)

GIGAIPC reserves the right to modify or change technical data without prior notice.

Dimension

2023/10/26

Unit: mm



Optional Kit

Part No.	Description	Quantity
25ST4-353205-Y0R	Fansink (Used with P/N: 9CIEPIMR-SI)	1
9CIEPIMR-SI	PCIe-to-MXM adapter	1

GIGAIPC reserves the right to modify or change technical data without prior notice.